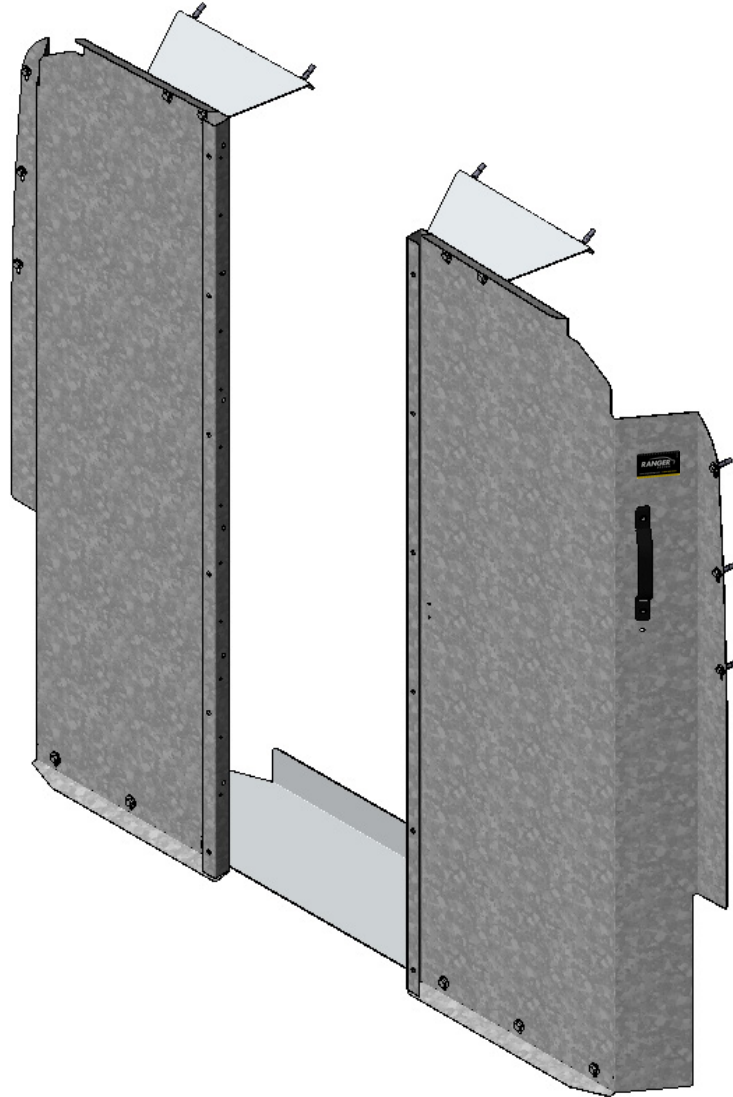
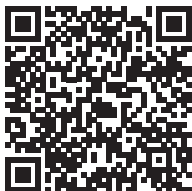


# INSTALLATION GUIDE



## C24-X STRAIGHT PARTITION

Promaster ( Walk-Through, Steel )



Scan the QR for the latest Install-Guide.





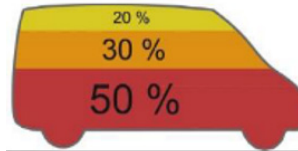
# BEFORE YOU BEGIN

READ, UNDERSTAND, AND FOLLOW ALL WARNINGS AND INSTRUCTIONS BEFORE USING THIS PRODUCT. FAILURE TO FOLLOW THESE DIRECTIONS MAY RESULT IN PROPERTY DAMAGE, SERIOUS BODILY INJURY, AND/OR DEATH. RANGER DESIGN IS NOT RESPONSIBLE FOR ANY PROPERTY DAMAGE, PERSONAL INJURY, OR DEATH THAT OCCURRED WHILE USING ANY RANGER DESIGN PRODUCTS.



## WARNING

- Failure to use Ranger Design-provided fasteners, brackets, and proper installation guidelines could increase risk of serious personal injury and/or death.
- If drilling is required to complete this installation: improper drilling can cause property damage to vehicles and could lead to electric shock, fire, or even death.
- If drilling is required to complete this installation: Ensure that drilling is only performed on areas of the vehicle allowed by the vehicle's Original Equipment Manufacturer's Body Builders Layout Book (or equivalent document).
- Prior to installation, inspect the vehicle to ensure that installation will not interfere with, or cause obstruction of, any critical components such as electrical wiring, fuel tanks, fuel-cells, locks, latches, etc.
- The installer or manufacturer is responsible for ensuring anchorages are installed onto suitable wall and floor structures; wall and floor strength must meet applicable performance requirements.
- Do not install systems into any weak or unsound materials such as plastics, woods, thin-walled metals, etc. without proper reinforcement.
- Do not install this product where it could interfere with the deployment of airbags. Failure to comply could result in death or serious injury.
- Do not install this product where it could ingress on the Transit Occupant Protection Zone. Failure to comply could result in death or serious injury.
- Incorrect installation could cause water leaks, electric shock or fire.
- Any cargo vehicle with any cargo or equipment should use a certified partition. See Ranger Design website for some partition options. (<https://rangerdesign.com/>)
- Mountings rails are recommended for any attachment to the vehicle walls.
- All items in the cargo area should be properly secured and partition doors closed while the vehicle is in motion.
- Check your vehicle's tare weight and remaining load capacity with all the equipment installed. Never exceed the maximum Gross Vehicle Weight Rating (GVWR), Gross Axle Weight Ratings (GAWRs), or other maximum loads permitted by the vehicle's Original Equipment Manufacturer (OEM) and required by law.
- The heaviest items must be placed towards the bottom of the vehicle, while the lightest ones can be arranged upwards. Vehicle cargo loading weight proportion should follow the following guidelines:



- The final alterer and/ or modifier should review the warning sheet with the customer before the vehicle is released to the customer or for general use. These instructions should remain with the vehicles a all times.
- Any modification or unintended use of this product voids any warranty and could create a hazardous condition.
- Ranger Design provides recommended assembly and installation instructions which should be followed to ensure correct operation. Failure to do so could result in invalidating the product's compliance, warranty and cause injury. Notwithstanding, the final stage vehicle alterer and/or modifier is responsible for the integration, installation, and compliance of the product in its final location to all applicable regulations and standards. Failure to maintain compliance of the vehicle to applicable regulations and standards could be punishable by law. Alterers and/or modifiers should consult with all local authorities prior to commissioning.



## CAUTION

- If drilling is required to complete this installation. Before drilling, ensure that you will not hit any critical parts of the vehicle like the gas tank, wiring harness, or hose. Consult the vehicle OEM documentation as necessary. When drilling, use a drill collar to reduce the risk of damage to the vehicle.
- Any materials, padding, or glazing installed in the vehicle must comply with FMVSS/CMVSS 201/205/302, as applicable.
- In the event of a motor vehicle accident or collision where a Ranger system has been installed, especially ones where the vehicle structure is damaged and/or the air bags deploy and/or the vehicle has been towed, the system must be inspected to ensure continued soundness and safety before returning the vehicle to service. Damaged components should be replaced as necessary.
- All system components should be regularly inspected, cleaned, and maintained pursuant to Ranger guidelines.

# QUICK START GUIDE

## Phase 1 - Assembly

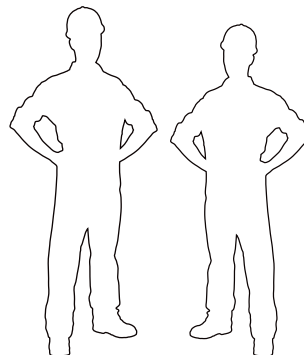
❑ 1.1 Setup.....	4
❑ 1.2 Partition assembly.....	6

## Phase 2 - Installation

❑ 2.1 Tips on how to attach a plusnut.....	7
❑ 2.2 Vehicle preparation.....	8
❑ 2.3 Straight partition installation.....	10

# REQUIRED ITEMS

- ❑ Cordless Driver
- ❑ Cordless Impact
- ❑ Cordless Drill
- ❑ Marker
- ❑ Plusnut Tool
- ❑ Socket Wrench
- ❑ Tape Measure
- ❑ 3/16" Impact Bit
- ❑ 7/16" Socket
- ❑ 1/2" Socket
- ❑ 13mm Socket
- ❑ 9/16" Wrench
- ❑ 3/8" Drill Bit
- ❑ 1" Hole Saw
- ❑ Drill stop

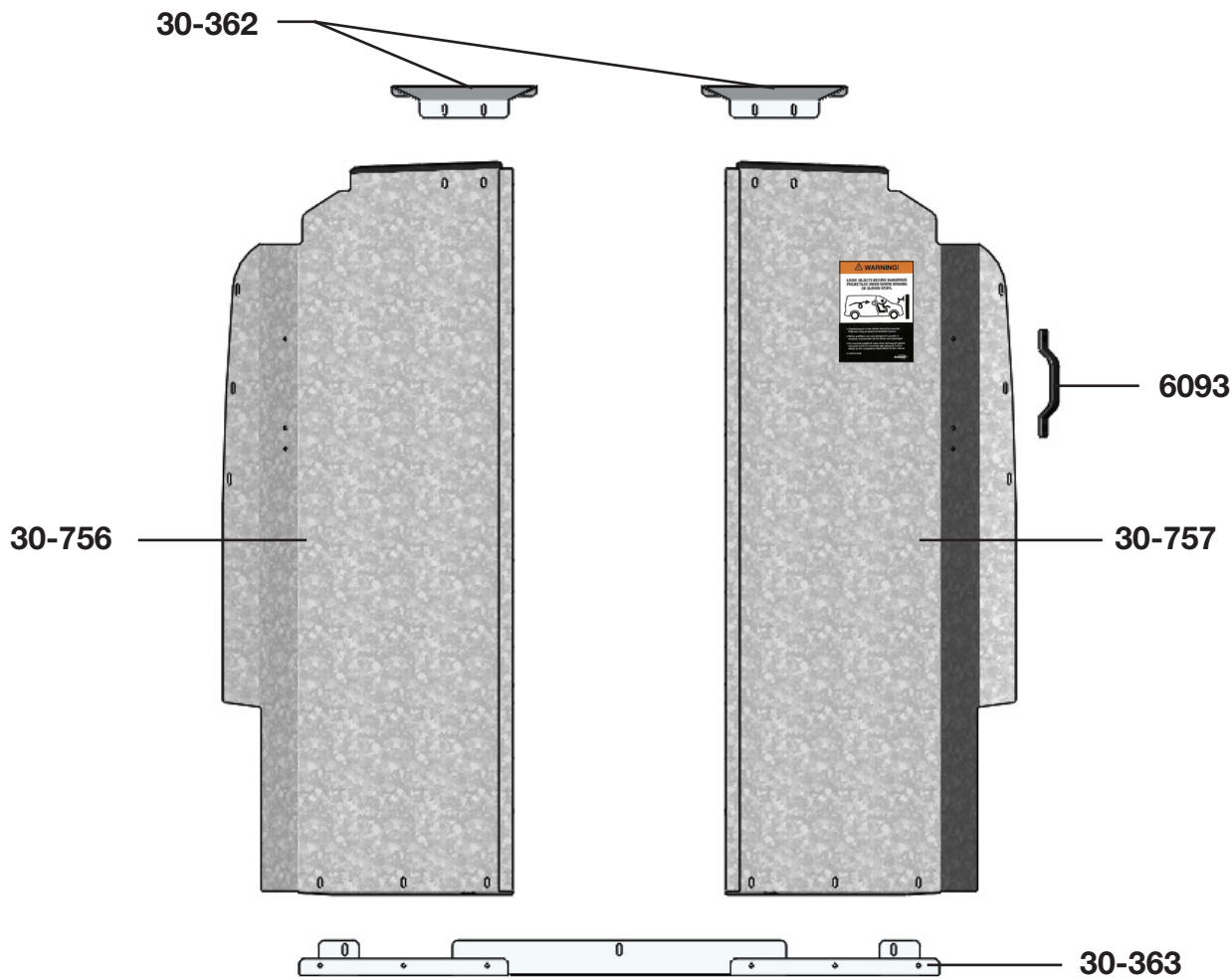


**2  
PERSONS**

# PHASE 1– ASSEMBLY

## 1.1 SETUP

1.1.1 Unpack components; compare with the bill of materials.




1.1.2 Verify all parts are present.

Item No.	Description	Qty.
30-362	Top Bracket	2
30-363	Floor Bracket	1
30-756	Driver Side Panel	1
30-757	Passenger Side Panel	1
6093	Grab Handle	1
79-932	Warning Label ( Bilingual )	1
94-3021	Assembly Fastener Bag	1
94-6093	Assembly Fastener Bag	1
96-3013	Installation Fastener Bag	1

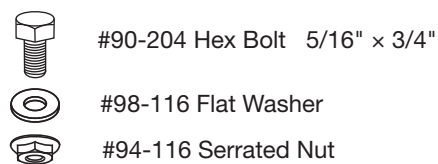
### 1.1.3 Identify the **Assembly** and **Installation** fastener bags.

#### 94-3021 Fastener Bag

10x		# 90-204	Hex Bolt 5/16"-18 x 3/4" GR-5 ZINC
10x		# 94-116	Serrated Nut 5/16"-18 ZINC
10x		# 98-116	Flat Washer 5/16", 7/8" OD ZINC

#### Hardware Assembly

10x

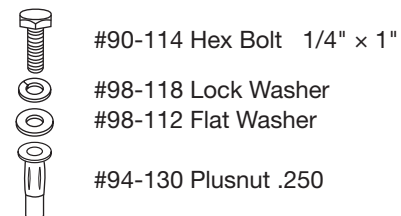


#### 96-3013 Fastener Bag

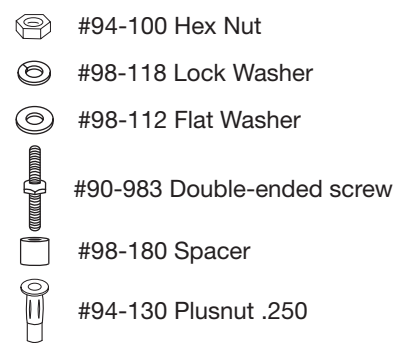
5x		# 90-114	Hex Bolt 1/4"-20 x 1" GR-5 ZINC
2x		# 90-666	Hex Bolt M8-1.25 x 20 CL 8.8 DIN 933 BLACK OXIDE
6x		# 90-983	Double-ended screw, 1/4-20 UNC, 1.125" Long
6x		# 94-100	Nut Hex-Head 1/4"-20 ZINC
11x		# 94-130	Plus nut (nutsert) 1/4"-20
11x		# 98-112	Flat Washer 1/4", 3/4" OD ZINC
2x		# 98-116	Flat Washer 5/16", 7/8" OD ZINC
11x		# 98-118	Lock Washer Regular 1/4" ZINC
2x		# 98-122	Lock Washer Regular 5/16" ZINC
6x		# 98-180	Spacer, .688 Long

#### Hardware Assembly

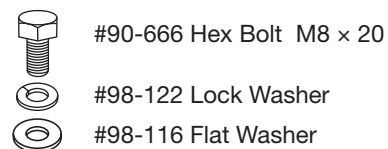
5x



6x



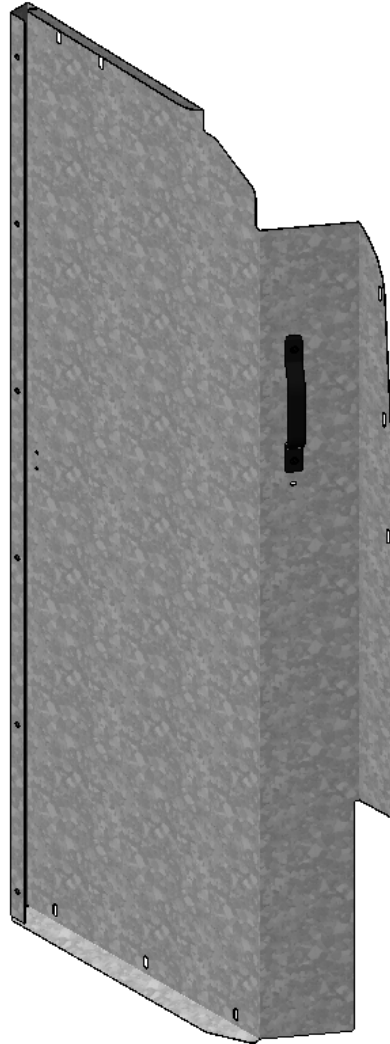
2x



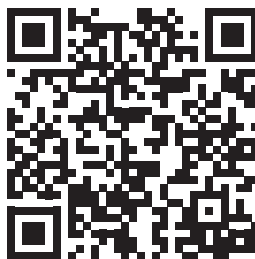
# PHASE 1 – ASSEMBLY

## 1.2 PARTITION ASSEMBLY

**1.2.1** Remove all the PVC from all the parts, then attach the grab handle to the passenger side panel.



For proper installation of the grab handle visit [rangerdesign.com](https://rangerdesign.com) or scan the QR code for instructions.

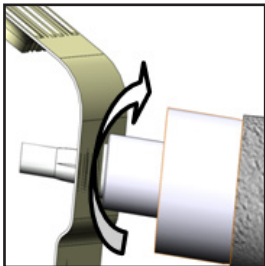


# PHASE 2 – INSTALLATION

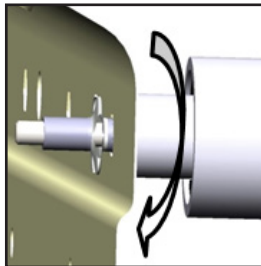
## 2.1 TIPS ON HOW TO ATTACH A PLUSNUT

### 2.1.1 Attach the plusnut using the plusnut gun.

**TIPS:** Put the plusnut on the plusnut gun, then attach the plusnut in the hole by turning the gun forward until the plusnut locks, then remove the gun by turning in reverse.



**FORWARD**

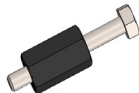


**REVERSE**



### 2.1.2 Attach the plusnut using the 6490 plusnut tool.

**NOTE:** The hardware used for the 6490 plusnut tool is not included in the fastener bag. The 6490 plusnut tool can be ordered separately upon demand at no charge.

**6490**



#### HARDWARE USED

-  Flat washer 1/4"
-  Flat washer 1/4" BS x 3/4" OD

#### TOOLS

- ☐ Cordless Impact
- ☐ 7/16" Socket
- ☐ 9/16" Wrench

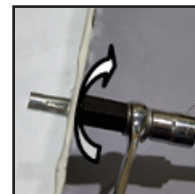
#### TIPS STEP 1:

Assemble the 6490 plusnut tool with the hardware needed, plusnut and the 9/16" wrench as shown.



#### TIPS STEP 2:

Attach the plusnut in the hole by turning the bolt forward using an impact with a 7/16" socket until the plusnut locks, then remove the bolt by turning the impact in reverse.



**FORWARD**



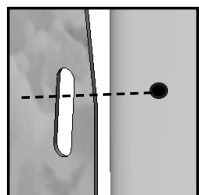
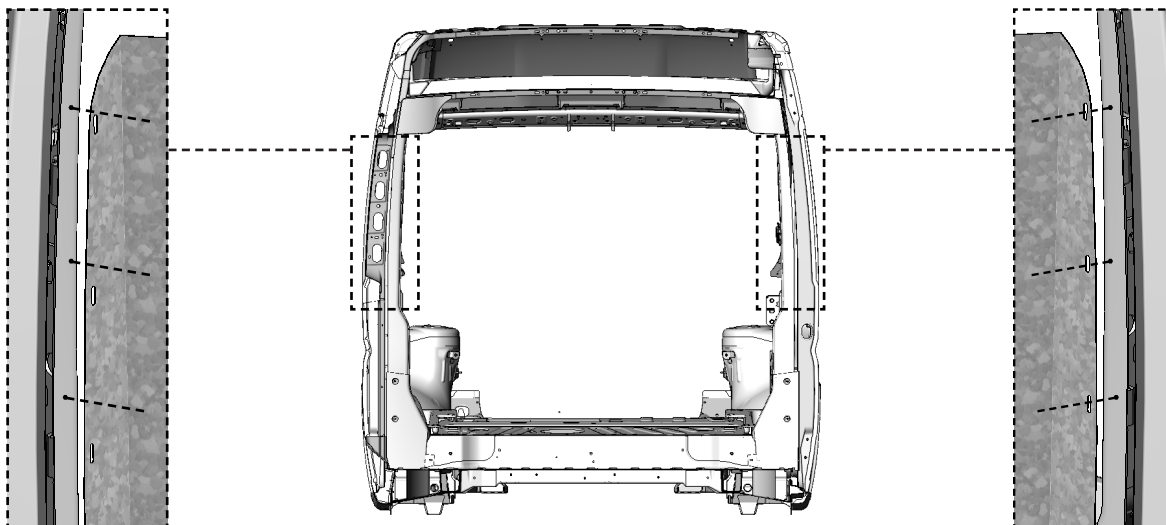
**REVERSE**



# PHASE 2 – INSTALLATION

## 2.2 VEHICLE PREPARATION

### 2.2.1 Driver and passenger sides preparation.



Put the partition in place, then put a mark on the van through the holes of the driver and passenger side panels.

#### TOOLS

- ☐ Marker



Drill through the plastic using the hole saw.

#### TOOLS

- ☐ Cordless Drill
- ☐ 1" Hole Saw



#### TOOLS

- ☐ Cordless Drill
- ☐ 3/8" Drill Bit or Step Drill
- ☐ Drill stop



Attach plusnuts in the 6 holes.

#### TOOLS

- ☐ Plusnut Tool

#### HARDWARE USED

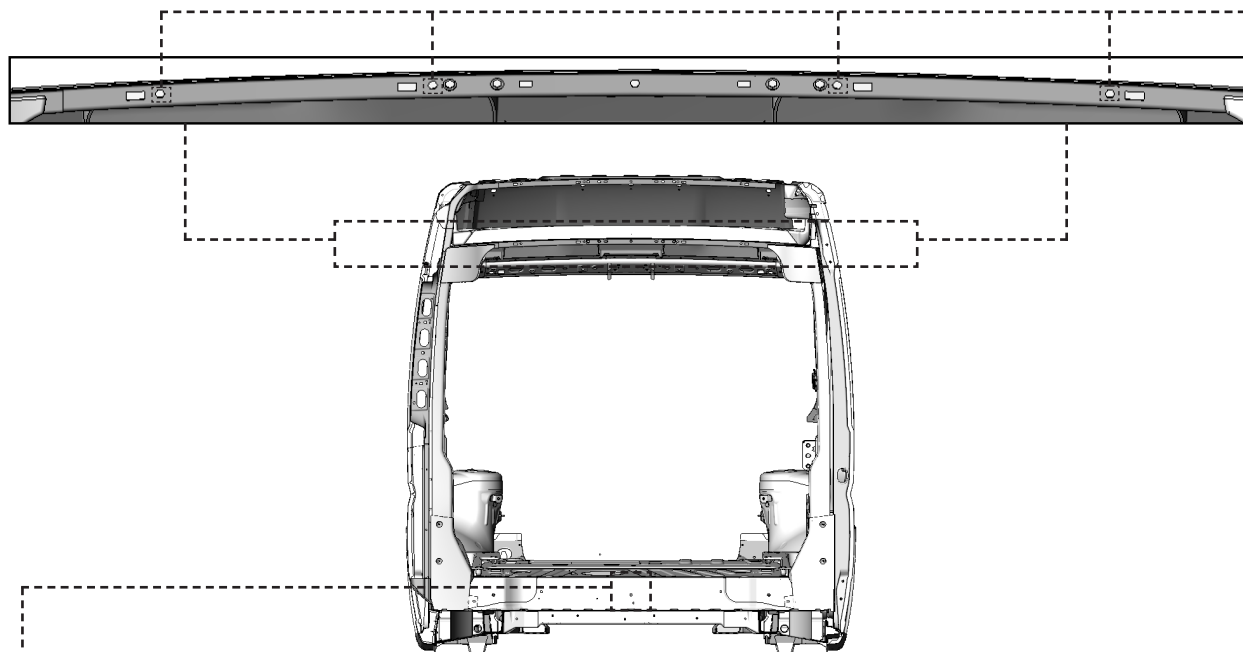
6x



# 94-130  
Plusnut .250



### 2.2.2 Ceiling and floor preparation.



Attach plusnut on the center hole in the floor.



**TOOLS**  
☐ Plusnut Tool

#### HARDWARE USED

**1x**



# 94-130  
Plusnut .250

Enlarge these holes if the plusnuts don't fit using 3/8" drill bit or step drill.



#### TOOLS

- ☐ Cordless Drill
- ☐ 3/8" Drill Bit or Step Drill
- ☐ Drill stop

Cut or drill the plastic cover through the 4 holes, then Attach plusnuts in the 4 holes.



#### TOOLS

- ☐ Plusnut Tool
- ☐ 1" Hole Saw or Knife

#### HARDWARE USED

**4x**

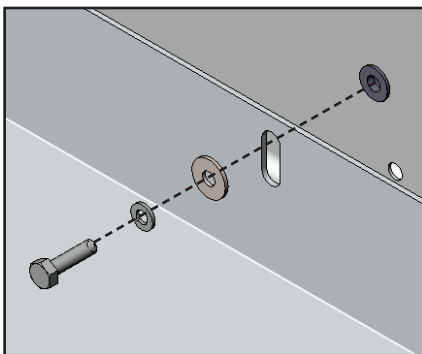
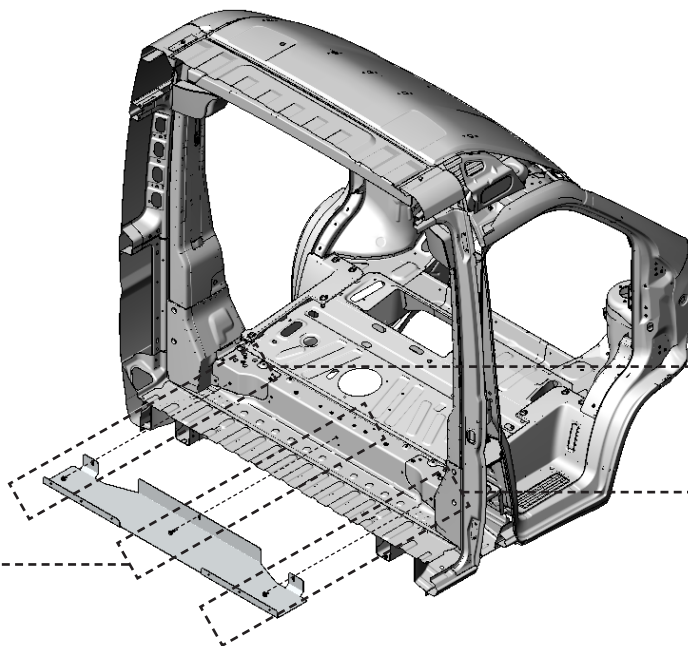


# 94-130  
Plusnut .250

# PHASE 2 – INSTALLATION

## 2.3 STRAIGHT PARTITION INSTALLATION

### 2.3.1 Floor bracket installation.



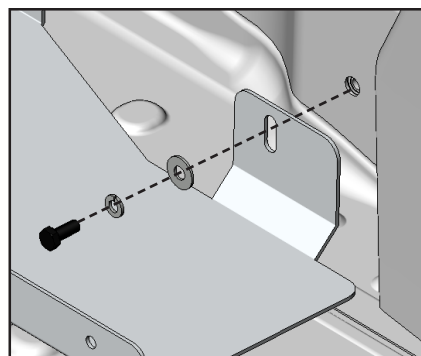
#### TOOLS

- Cordless Impact
- 7/16" Socket

#### HARDWARE USED

1x

- |   |                            |
|---|----------------------------|
|  | #90-114 Hex Bolt 1/4" x 1" |
|  | #98-118 Lock Washer        |
|  | #98-112 Flat Washer        |






#### TOOLS

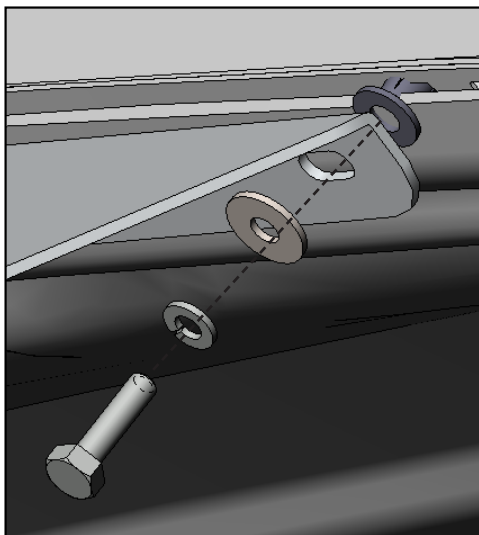
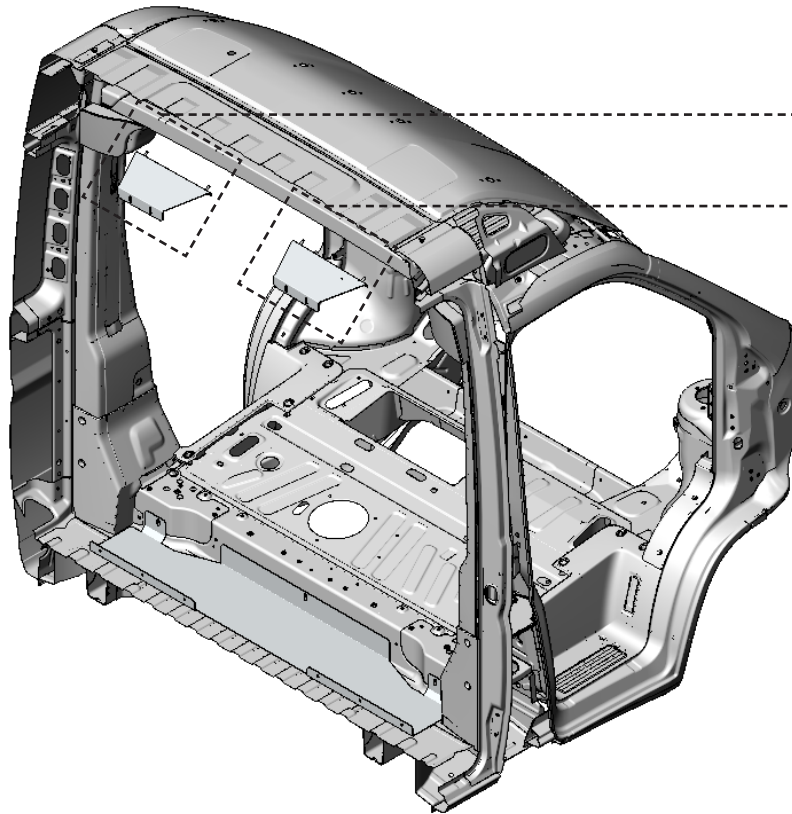
- Socket Wrench
- 13mm Socket

#### HARDWARE USED

2x

- |  |                          |
|--|--------------------------|
|  | #90-666 Hex Bolt M8 x 20 |
|  | #98-122 Lock Washer      |
|  | #94-116 Flat Washer      |

### 2.3.2 Ceiling bracket installation



#### TOOLS

- Cordless Impact
- 7/16" Socket

#### HARDWARE USED

4x



#90-114 Hex Bolt 1/4" x 1"

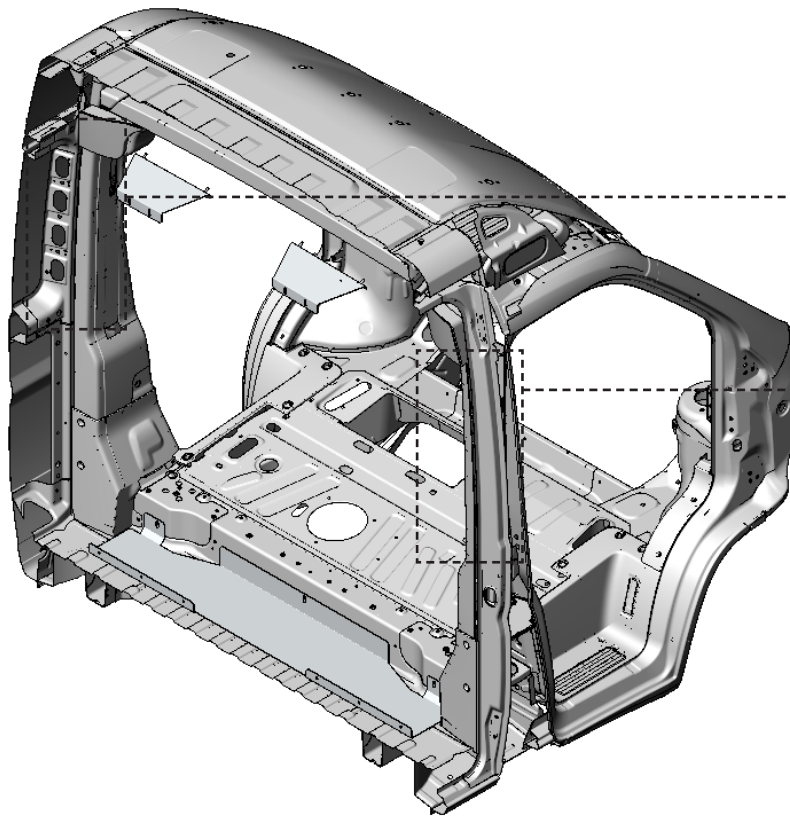


#98-118 Lock Washer



#98-112 Flat Washer

**2.3.3** Install double ended screws and spacers into van before placing partition panels.



**TOOLS**

- ☐ Cordless Impact
- ☐ 7/16" Socket

**HARDWARE USED**

**6x**



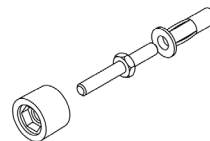
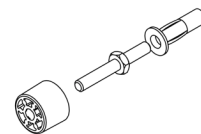
#90-983 Double-ended screw



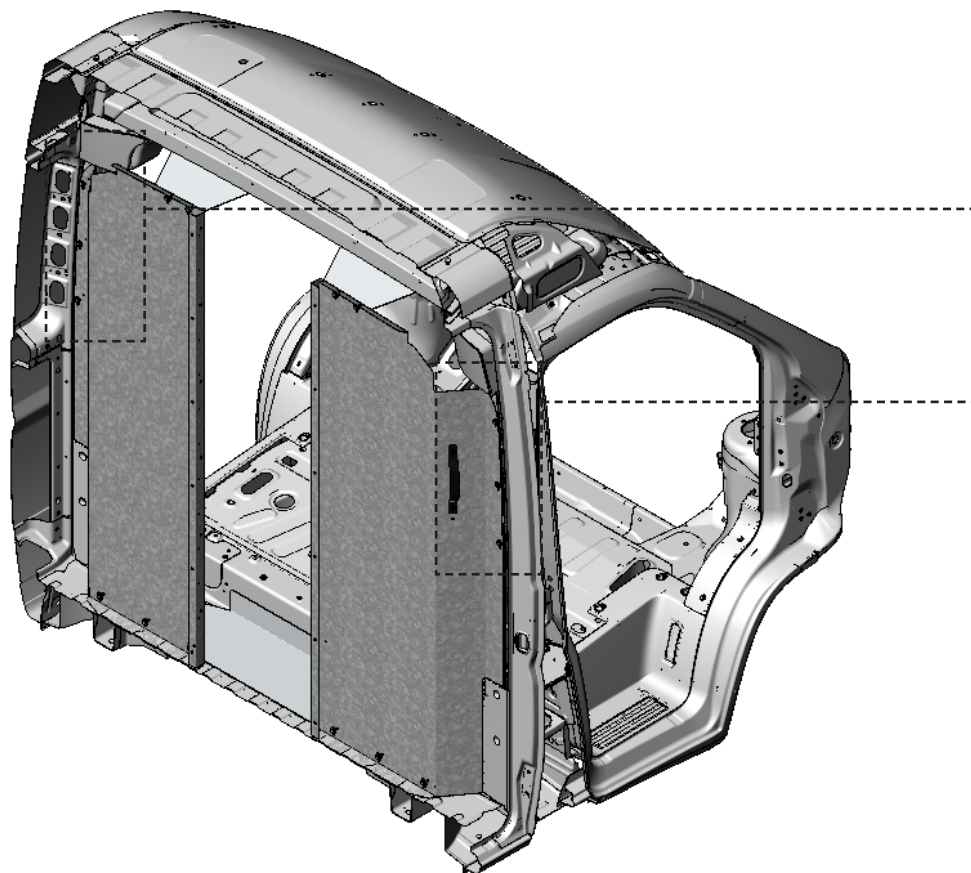
#98-180 Spacer



#94-130 Plusnut .250



**2.3.4** Attach the driver and passenger side panels to the van.






**TOOLS**

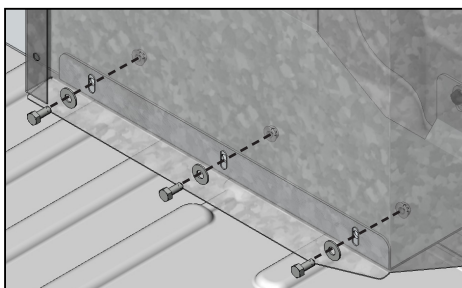
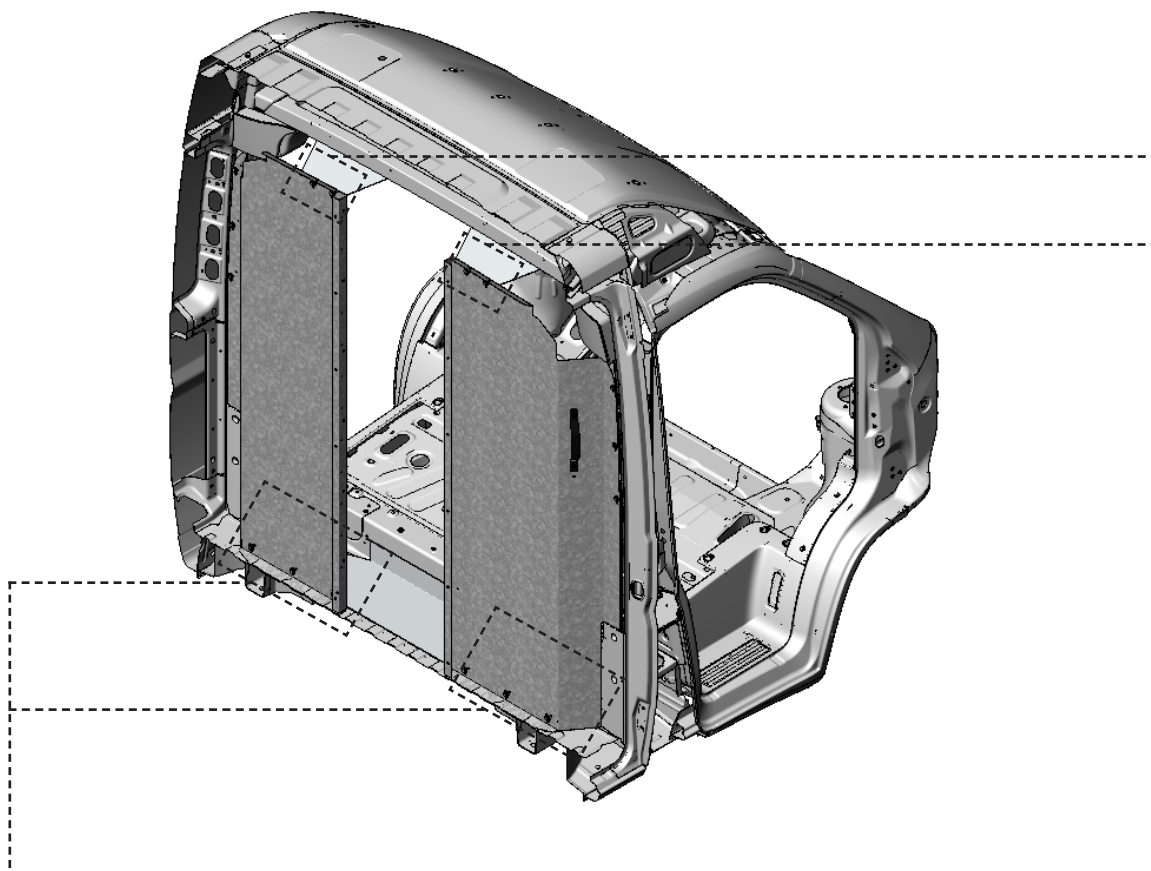
- ☐ Cordless Impact
- ☐ 7/16" Socket

**HARDWARE USED**

**6x**

- |   |                     |
|---|---------------------|
|  | #94-100 Hex Nut     |
|  | #98-118 Lock Washer |
|  | #98-112 Flat Washer |

**2.3.4** Attach the driver and passenger side panels to the ceiling brackets and the floor bracket.



**TOOLS**

- ☐ Cordless Impact
- ☐ 1/2" Socket

**HARDWARE USED**

**6x**



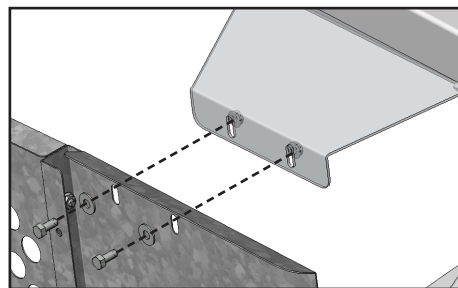
#90-204 Hex Bolt 5/16" x 3/4"



#98-116 Flat Washer



#94-116 Serrated Nut



**TOOLS**

- ☐ Cordless Impact
- ☐ 1/2" Socket

**HARDWARE USED**

**4x**



#90-204 Hex Bolt 5/16" x 3/4"



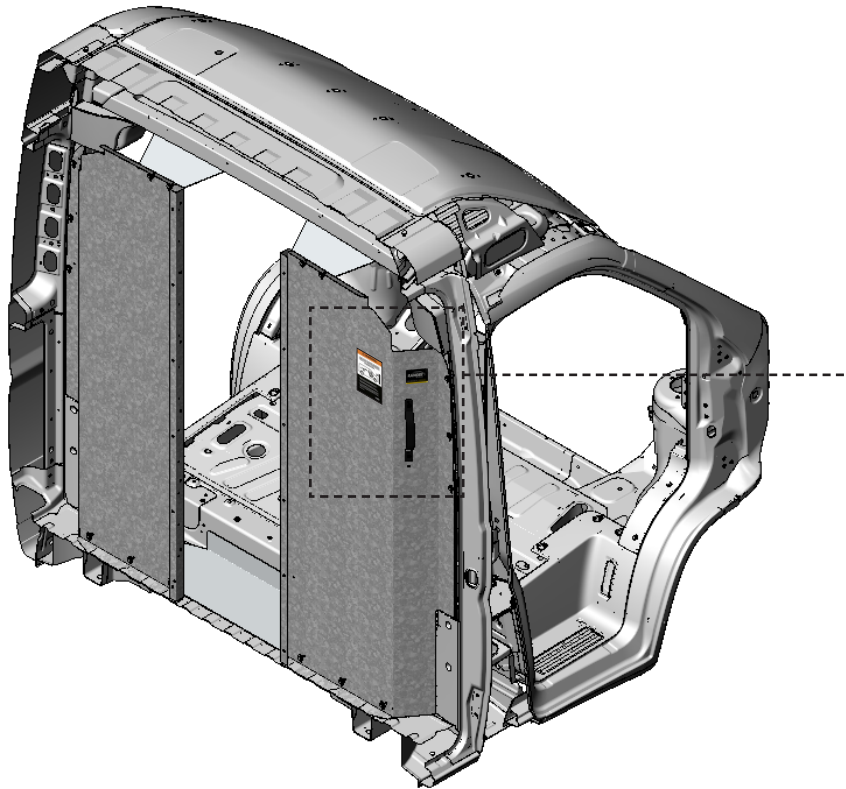
#98-116 Flat Washer



#94-116 Serrated Nut



**2.3.5** Apply the warning label on the passenger side panel.



**NOTE:** English warning label is already attached on the passenger side panel.

**“Congratulations, you have successfully installed your  
Straight Partition!”**

**Thank you for doing business with us.”**