

INSTALLATION GUIDE



6253 BUCKET SEAT SET

Ram ProMaster City (2015-2016)



Scan the QR for the latest Install-Guide.





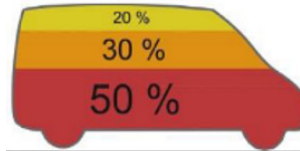
BEFORE YOU BEGIN

READ, UNDERSTAND, AND FOLLOW ALL WARNINGS AND INSTRUCTIONS BEFORE USING THIS PRODUCT. FAILURE TO FOLLOW THESE DIRECTIONS MAY RESULT IN PROPERTY DAMAGE, SERIOUS BODILY INJURY, AND/OR DEATH. RANGER DESIGN IS NOT RESPONSIBLE FOR ANY PROPERTY DAMAGE, PERSONAL INJURY, OR DEATH THAT OCCURRED WHILE USING ANY RANGER DESIGN PRODUCTS.



WARNING

- Failure to use Ranger Design-provided fasteners, brackets, and proper installation guidelines could increase risk of serious personal injury and/or death.
- If drilling is required to complete this installation: improper drilling can cause property damage to vehicles and could lead to electric shock, fire, or even death.
- If drilling is required to complete this installation: Ensure that drilling is only performed on areas of the vehicle allowed by the vehicle's Original Equipment Manufacturer's Body Builders Layout Book (or equivalent document).
- Prior to installation, inspect the vehicle to ensure that installation will not interfere with, or cause obstruction of, any critical components such as electrical wiring, fuel tanks, fuel-cells, locks, latches, etc.
- The installer or manufacturer is responsible for ensuring anchorages are installed onto suitable wall and floor structures; wall and floor strength must meet applicable performance requirements.
- Do not install systems into any weak or unsound materials such as plastics, woods, thin-walled metals, etc. without proper reinforcement.
- Do not install this product where it could interfere with the deployment of airbags. Failure to comply could result in death or serious injury.
- Do not install this product where it could ingress on the Transit Occupant Protection Zone. Failure to comply could result in death or serious injury.
- Incorrect installation could cause water leaks, electric shock or fire.
- Any cargo vehicle with any cargo or equipment should use a certified partition. See Ranger Design website for some partition options. (<https://rangerdesign.com/>)
- Mountings rails are recommended for any attachment to the vehicle walls.
- All items in the cargo area should be properly secured and partition doors closed while the vehicle is in motion.
- Check your vehicle's tare weight and remaining load capacity with all the equipment installed. Never exceed the maximum Gross Vehicle Weight Rating (GVWR), Gross Axle Weight Ratings (GAWRs), or other maximum loads permitted by the vehicle's Original Equipment Manufacturer (OEM) and required by law.
- The heaviest items must be placed towards the bottom of the vehicle, while the lightest ones can be arranged upwards. Vehicle cargo loading weight proportion should follow the following guidelines:



- The final alterer and/ or modifier should review the warning sheet with the customer before the vehicle is released to the customer or for general use. These instructions should remain with the vehicles a all times.
- Any modification or unintended use of this product voids any warranty and could create a hazardous condition.
- Ranger Design provides recommended assembly and installation instructions which should be followed to ensure correct operation. Failure to do so could result in invalidating the product's compliance, warranty and cause injury. Notwithstanding, the final stage vehicle alterer and/or modifier is responsible for the integration, installation, and compliance of the product in its final location to all applicable regulations and standards. Failure to maintain compliance of the vehicle to applicable regulations and standards could be punishable by law. Alterers and/or modifiers should consult with all local authorities prior to commissioning.



CAUTION

- Drilling is required to complete this installation. Before drilling, ensure that you will not hit any critical parts of the vehicle like the gas tank, wiring harness, or hose. Consult the vehicle OEM documentation as necessary. When drilling, use a drill collar to reduce the risk of damage to the vehicle.
- Any materials, padding, or glazing installed in the vehicle must comply with FMVSS/CMVSS 201/205/302, as applicable.
- In the event of a motor vehicle accident or collision where a Ranger system has been installed, especially ones where the vehicle structure is damaged and/or the air bags deploy and/or the vehicle has been towed, the system must be inspected to ensure continued soundness and safety before returning the vehicle to service. Damaged components should be replaced as necessary.
- All system components should be regularly inspected, cleaned, and maintained pursuant to Ranger guidelines.

QUICK START GUIDE

Phase 1 - Preparation

1.1 Adjust Seat.....	4
1.2 Remove Headrests.....	4

Phase 2 - Installation

2.1 Install Seat Back Cover.....	4
2.2 Install Seat Bottom Cover.....	5
2.3 Install Headrest Cover.....	7

BILL OF MATERIALS

Item No.	Description	Qty.
62-533	Seat Back Cover Passenger Side	1
62-541	Seat Bottom Cover Passenger Side	1
62-534	Headrest Cover Passenger Side	1
62-532	Seat Back Cover Driver Side	1
62-530	Seat Bottom Cover Driver Side	1
62-534	Headrest Cover Driver Side	1
	String Lock	1

PHASE 1 – PREPARATION

1.1 REMOVING

1.1.1 Adjust Seat.

Slide seat forward and tip seat back ahead.

1.1.2 Remove Headrests.

Pull headrests out of the seats by pressing the tabs at the base of the headrests and pulling the headrest up.



PHASE 2 – INSTALLATION

2.1 SEAT COVER INSTALLATION



2.1.1 Install Seat Back Cover by ensure the tag inside the cover corresponds with the seat you are working on. Each cover will have a Driver or Passenger tag.

2.1.2 Turn seat cover 3/4 of the way inside out.

2.1.3 Pull seat back cover into position, making sure that the holes in the cover align with the holes in the seat back.

2.1.4 Stretch the cover over the headrest holes.

2.1.5 Continue pulling the cover down the seat back, turning it right side out as you go.

2.1.6 Push flap from front of cover between seat back and seat bottom, out the back of the seat.

2.1.7 Double the end of the flap over to prevent the “hook” Velcro from sticking to the factory upholstery.

2.1.8 Pull the flap tight and attach to the Velcro on the back of the seat.

2.1.9 Fasten Velcro flap under armrest.

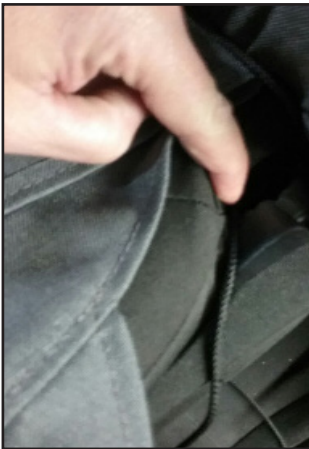
2.2 INSTALL SEAT BOTTOM COVER

2.2.1 Ensure the tag inside the cover corresponds.

2.2.2 Place seat bottom cover over bottom of seat.



2.2.3 Push flap on top of cover between seat back and seat bottom.



2.2.4 Push strings between seat bottom and plastic trim. They will go through where the seat back and bottom meet.

2.2.5 Pull strings behind seat and pull tight.

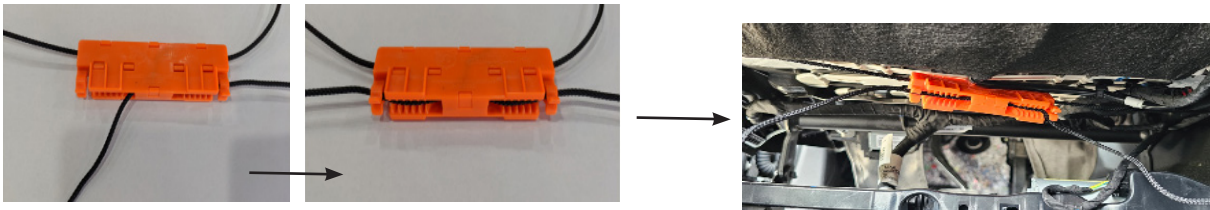
2.2.6 Insert one end of the string through the channel on the end of the StringLock.



2.2.7 Pull the string tight so that it pulls the stringlock to one edge of the seat and press the string in the clamp to lock it.



2.2.8 Repeat the same two steps for locking in the second strip which in turn will have the stringlock hold the seat



2.2.9 Pull bottom flaps from front of seat bottom and attach to top flap.

2.2.10 Flaps **MUST** run **OVER** seat positioning bar in front.



Seat cover bottom flap, running **OVER** all bars,

2.3 INSTALL HEADREST COVERS.

2.3.1 Put headrests back on seats.

2.3.2 Press tabs at base of headrest and push headrest into seat back.

2.3.3 Pull headrest cover over headrest with “hook” Velcro on the back and “loop” Velcro on the front.

2.3.4 Pull front flap over back flap and fasten.



**“Congratulations, you have successfully installed your
Seat Cover Set!”**

Thank you for doing business with us.”

