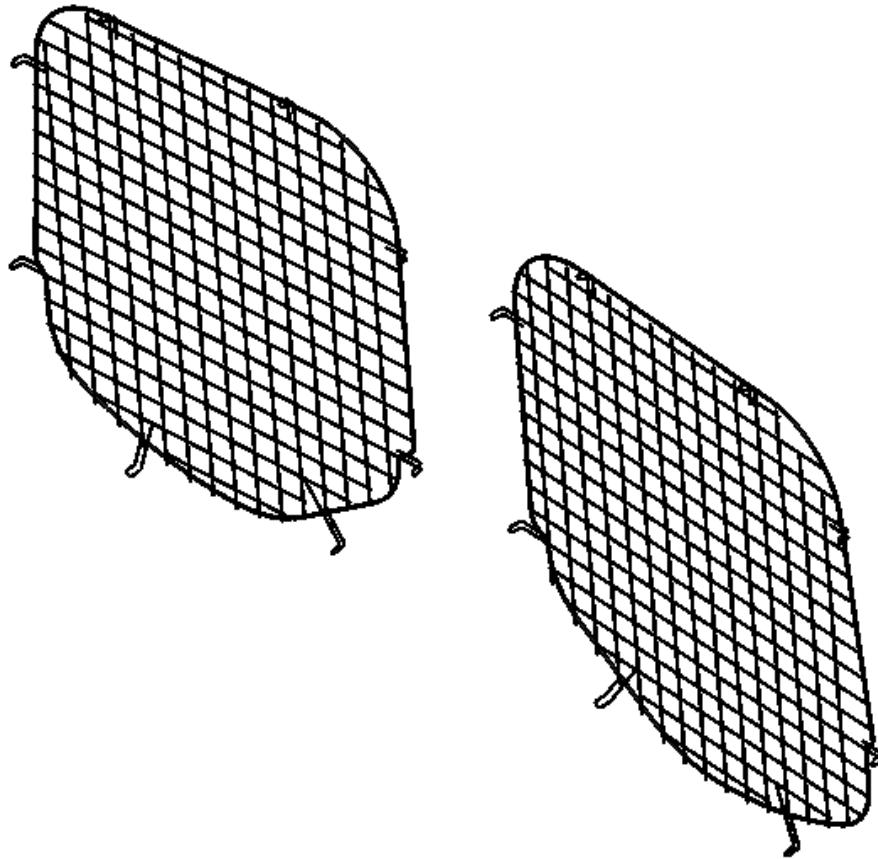


INSTALLATION GUIDE



6107-19 Window Grills
Mercedes - Benz (Rear Window Grills)

QUICK START GUIDE

Phase 1 - Assembly

1.1 Setup..... 3 - 4

Phase 2 - Installation

2.1 Window Grill Installation..... 4 - 6

REQUIRED ITEMS



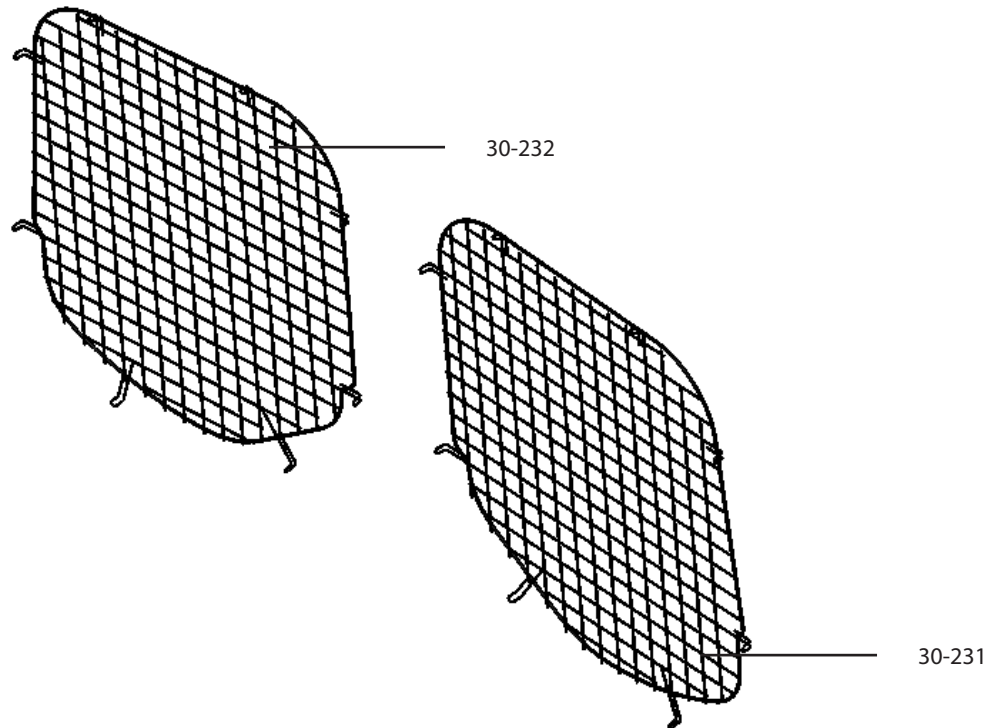
1
PERSONS

- Cordless Drill
- 3/8" Driver Bit
- Knife

PHASE 1 – ASSEMBLY

1.1 SETUP

1.1.1 Unpack components; compare with the bill of materials.



1.1.2 Verify all parts are present.

| Item No. | Description | Qty. |
|----------|---|------|
| 30-231 | Driver Side Rear Window Grill Sprinter 2019+ | 1 |
| 30-232 | Passenger Side Rear Window Grill Sprinter 2019+ | 1 |
| 96-6004 | Customer Installation Fastener Kit | 1 |

96-6004 Fastener Kit



Fastener Assembly

16x



92-100

Screw HWH
#14 x 3/4"
ZINC

16x

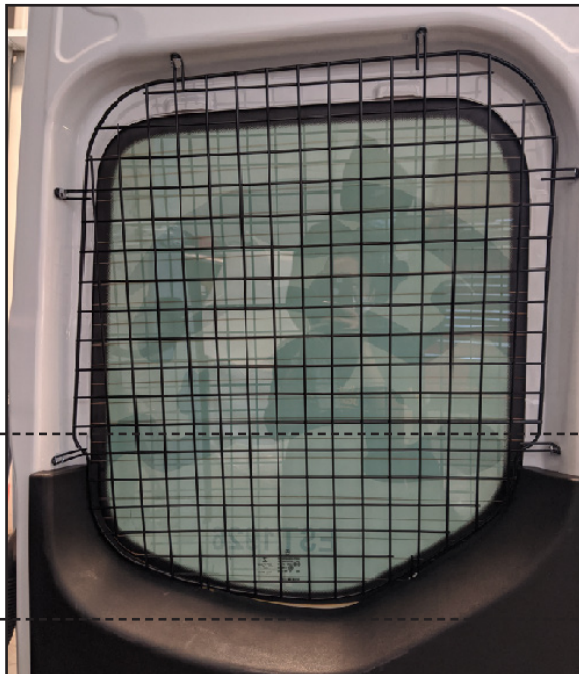


#92-100 Screw 3/4"

PHASE 2 – INSTALLATION

2.1 WINDOW GRILL INSTALLATION

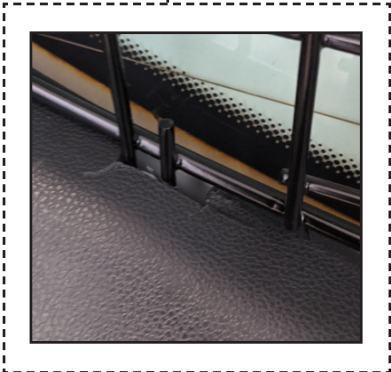
- 2.1.1 • Place driver side window grill on the driver side rear door.
- Pull the plastic cover off, then mark and trim the plastic cover.



TOOLS
□ Cutter




2.1.2 Place driver side window grill on the driver side rear door back, then screw the window grill on the door.

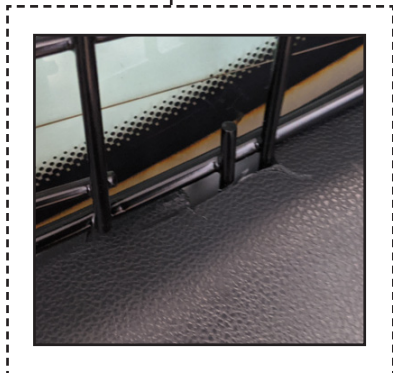


- TOOLS
- ☐ Cordless Impact
 - ☐ 3/8" Driver Bit

HARDWARE USED
8X

| | |
|---|--------------------|
|  | #92-100 Screw 3/4" |
|---|--------------------|

2.1.2 Repeat the step 2.1.1 and 2.1.2 for the other window grill on the passenger side rear door.



TOOLS

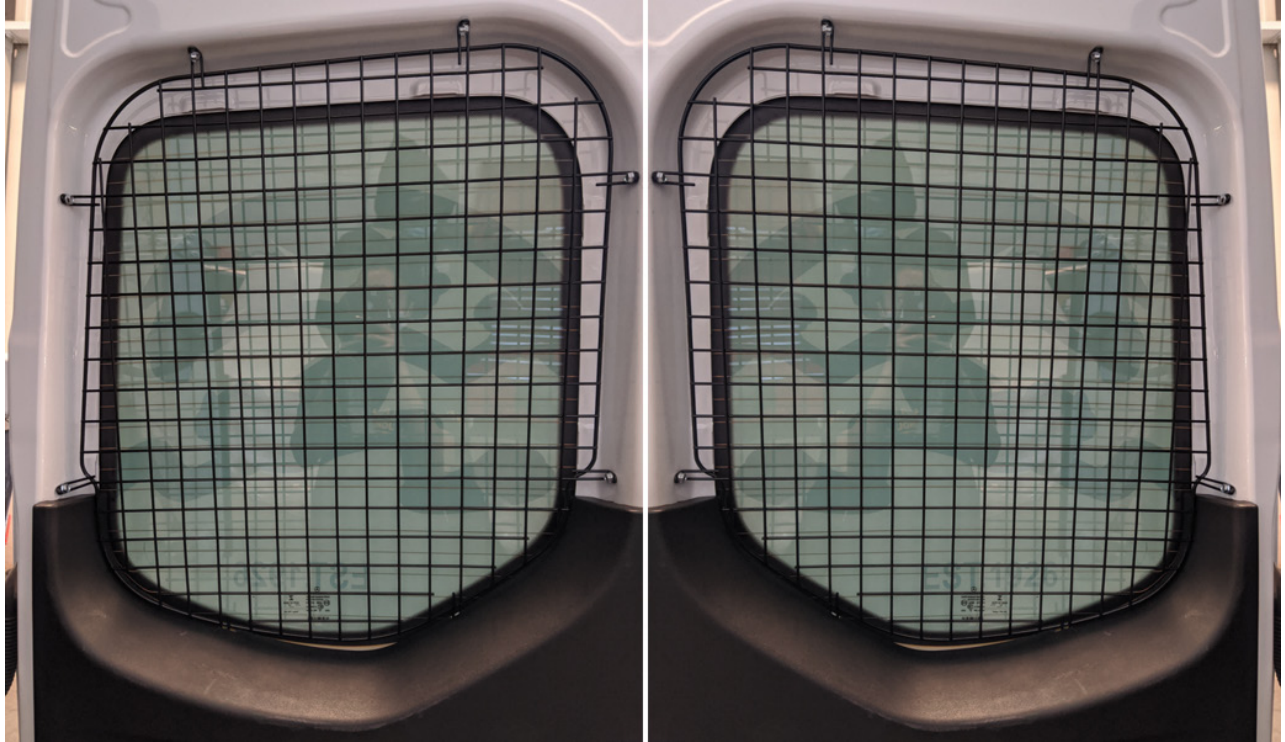
- Cordless Impact
- 3/8" Driver Bit

HARDWARE USED

8x



#92-100 Screw 3/4"



“You have successfully installed your
6107 - 19 Window Grill

Thank you for doing business with us.”

For any feedback or suggestions you may have, please contact: cs@rangerdesign.com

