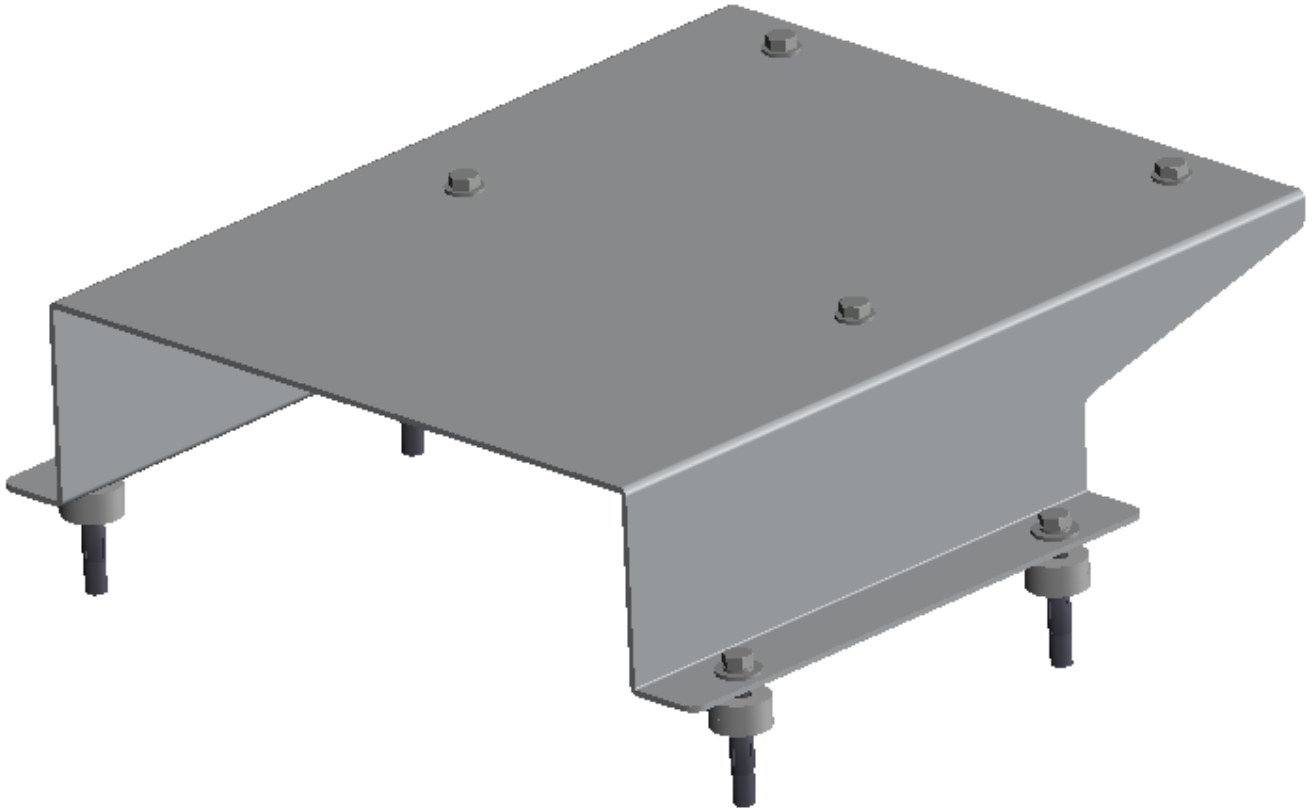
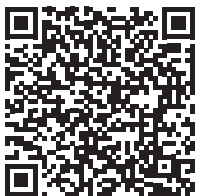


INSTALLATION GUIDE



5058 Raised Base Kit For Cab Box

GM Savana / Express



Scan the QR for the latest Install-Guide.





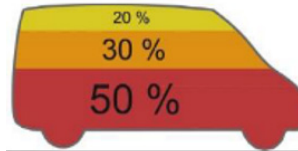
BEFORE YOU BEGIN

READ, UNDERSTAND, AND FOLLOW ALL WARNINGS AND INSTRUCTIONS BEFORE USING THIS PRODUCT. FAILURE TO FOLLOW THESE DIRECTIONS MAY RESULT IN PROPERTY DAMAGE, SERIOUS BODILY INJURY, AND/OR DEATH. RANGER DESIGN IS NOT RESPONSIBLE FOR ANY PROPERTY DAMAGE, PERSONAL INJURY, OR DEATH THAT OCCURRED WHILE USING ANY RANGER DESIGN PRODUCTS.



WARNING

- Failure to use Ranger Design-provided fasteners, brackets, and proper installation guidelines could increase risk of serious personal injury and/or death.
- If drilling is required to complete this installation: improper drilling can cause property damage to vehicles and could lead to electric shock, fire, or even death.
- If drilling is required to complete this installation: Ensure that drilling is only performed on areas of the vehicle allowed by the vehicle's Original Equipment Manufacturer's Body Builders Layout Book (or equivalent document).
- Prior to installation, inspect the vehicle to ensure that installation will not interfere with, or cause obstruction of, any critical components such as electrical wiring, fuel tanks, fuel-cells, locks, latches, etc.
- The installer or manufacturer is responsible for ensuring anchorages are installed onto suitable wall and floor structures; wall and floor strength must meet applicable performance requirements.
- Do not install systems into any weak or unsound materials such as plastics, woods, thin-walled metals, etc. without proper reinforcement.
- Do not install this product where it could interfere with the deployment of airbags. Failure to comply could result in death or serious injury.
- Do not install this product where it could ingress on the Transit Occupant Protection Zone. Failure to comply could result in death or serious injury.
- Incorrect installation could cause water leaks, electric shock or fire.
- Any cargo vehicle with any cargo or equipment should use a certified partition. See Ranger Design website for some partition options. (<https://rangerdesign.com/>)
- Mountings rails are recommended for any attachment to the vehicle walls.
- All items in the cargo area should be properly secured and partition doors closed while the vehicle is in motion.
- Check your vehicle's tare weight and remaining load capacity with all the equipment installed. Never exceed the maximum Gross Vehicle Weight Rating (GVWR), Gross Axle Weight Ratings (GAWRs), or other maximum loads permitted by the vehicle's Original Equipment Manufacturer (OEM) and required by law.
- The heaviest items must be placed towards the bottom of the vehicle, while the lightest ones can be arranged upwards. Vehicle cargo loading weight proportion should follow the following guidelines:



- The final alterer and/ or modifier should review the warning sheet with the customer before the vehicle is released to the customer or for general use. These instructions should remain with the vehicles a all times.
- Any modification or unintended use of this product voids any warranty and could create a hazardous condition.
- Ranger Design provides recommended assembly and installation instructions which should be followed to ensure correct operation. Failure to do so could result in invalidating the product's compliance, warranty and cause injury. Notwithstanding, the final stage vehicle alterer and/or modifier is responsible for the integration, installation, and compliance of the product in its final location to all applicable regulations and standards. Failure to maintain compliance of the vehicle to applicable regulations and standards could be punishable by law. Alterers and/or modifiers should consult with all local authorities prior to commissioning.



CAUTION

- Drilling is required to complete this installation. Before drilling, ensure that you will not hit any critical parts of the vehicle like the gas tank, wiring harness, or hose. Consult the vehicle OEM documentation as necessary. When drilling, use a drill collar to reduce the risk of damage to the vehicle.
- Any materials, padding, or glazing installed in the vehicle must comply with FMVSS/CMVSS 201/205/302, as applicable.
- In the event of a motor vehicle accident or collision where a Ranger system has been installed, especially ones where the vehicle structure is damaged and/or the air bags deploy and/or the vehicle has been towed, the system must be inspected to ensure continued soundness and safety before returning the vehicle to service. Damaged components should be replaced as necessary.
- All system components should be regularly inspected, cleaned, and maintained pursuant to Ranger guidelines.

QUICK START GUIDE

Phase 1 - Assembly

1.1 Setup..... 4

Phase 2 - Installation

2.1 Assemble with 5045 Cab Box..... 6
 2.2 Installation 7
 2.3 Using the Plusnut Tool..... 8

REQUIRED ITEMS

- Cordless Impact
- Cordless Drill
- Tape Measure
- Marker
- 7/16" Socket
- 1/2" Drill Bit w/ Drill Collar (Set at 1/2" Deep)
- Knife
- Plusnut Tool / Plusnut Gun (1/4")

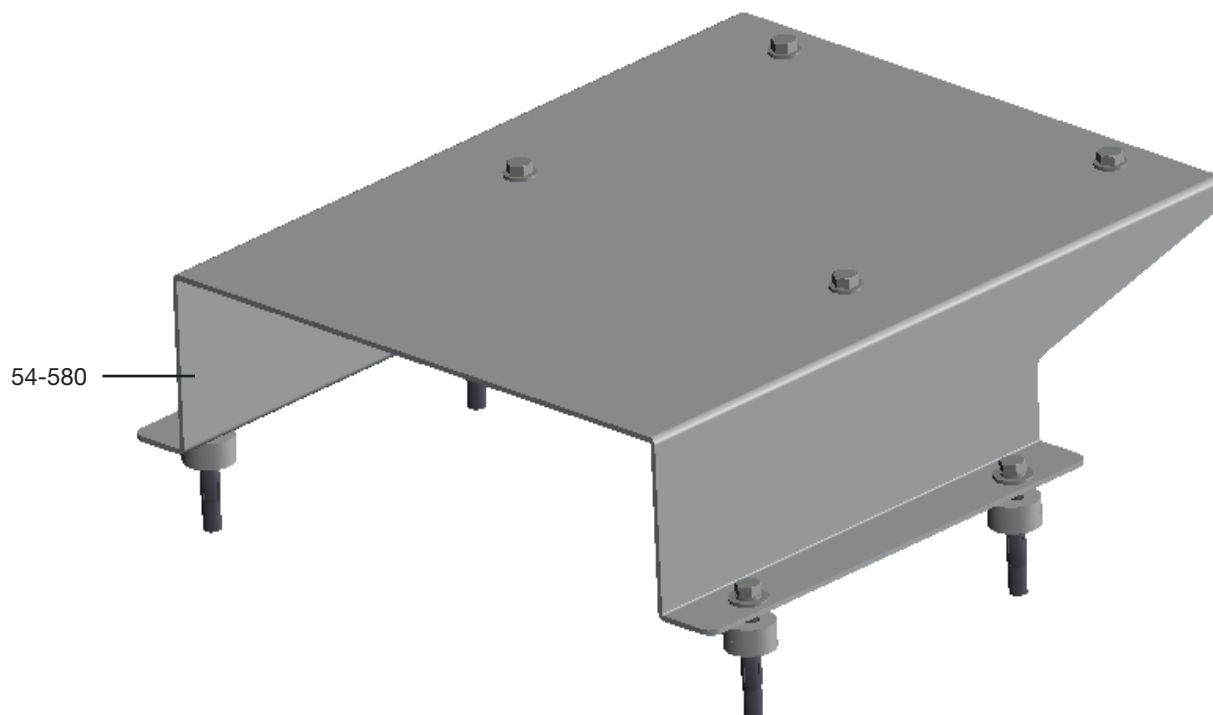


**1
PERSON**

PHASE 1 – ASSEMBLY

1.1 SETUP

1.1.1 Unpack all the components and compare with the bill of materials.



1.1.2 Verify all parts are present.

BILL OF MATERIALS

Item No.	Description	Qty.
54-580	Base - for Cab Box, GM VAN	1
90-5058	Install Fastener Kit	1

1.1.3 Fastener kits.

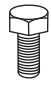



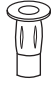
90-5058 Fastener Kit



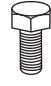


Fastener Install

- 4x**  **# 90-108** Hex Bolt
1/4\"-20 x 5/8\"
GR-5 ZINC
- 4x**  **# 90-130** Hex Bolt
1/4\"-20 x 2\"
GR-5 ZINC
- 4x**  **# 94-130** Plusnut 1/4\"-20
- 4x**  **# 94-112** Serrated Nut
1/4\"-20
ZINC
- 8x**  **# 98-106** Flat Washer
1/4\"
ZINC
- 4x**  **# 98-118** Lock Washer
Regular 1/4\"
ZINC
- 8x**  **# 98-157** Spacer
0.375\" ID, x 1.0\" OD x 0.25\"
LONG
NYLON

4x

-  **#90-130 Hex Bolt 1/4\" -20 x 2\"**
 -  **#98-118 Lock Washer**
 -  **#98-106 Flat Washer**
 -  **#98-157 Spacers x 2**
(QTY = GAP BETWEEN FLOOR AND END PANEL)
 -  **#94-130 1/4\" Plusnut**

4x

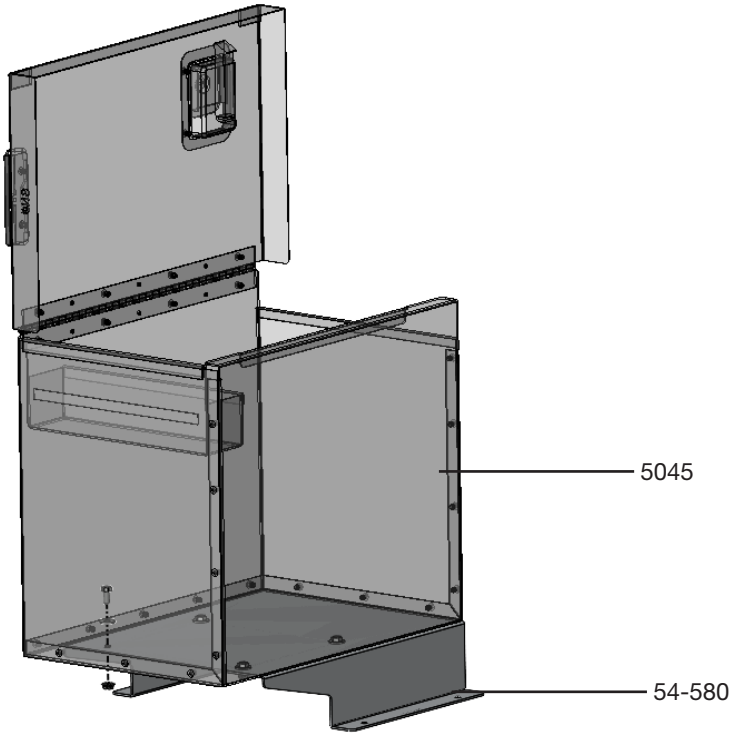
-  **#90-108 Hex Bolt 1/4\" x 5/8\"**
 -  **#98-106 Flat**
 -  **#94-112 Serrated Nut**

PHASE 2 – ASSEMBLY

2.1 ASSEMBLE WITH 5045 CAB BOX

2.1 Place and attach the 5045 Cab Box on the raiser.




NOTE: 5045 Cab Box is a separate unit.



TOOLS

- Cordless Impact
- 7/16" Socket

4x

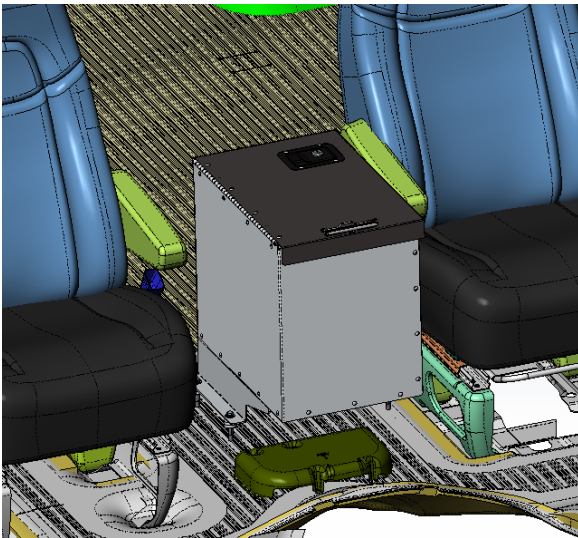
	#90-108 Hex Bolt 1/4"-20 x 5/8"
	#98-106 Flat Washer
	#94-112 Serrated Nut

2.2 INSTALLATION

- 2.2.1
- Place the cab box and raiser between the front seats.
 - Adjust the position forward or backward to avoid any seat armrest or mechanical handbrake levers.
 - Ensure rear end of Cab-box-mount is approximately 5 inches from the mat edge,
 - Mark the location of the 4 holes and remove cab box and riser.
 - Drill and insert the 4 Plusnuts. See Section 2.3 on using the Plusnut tool.



WARNING: Verify with the vehicle manufacturer before drilling through the floor, that no wires, cables or other items are underneath. Adjust the position of the cab box raiser to avoid any items underneath.




TOOLS

- Cordless drill
- 1/2" Drill Bit
- Plusnut tool
- 7/16" Socket

HARDWARE USED

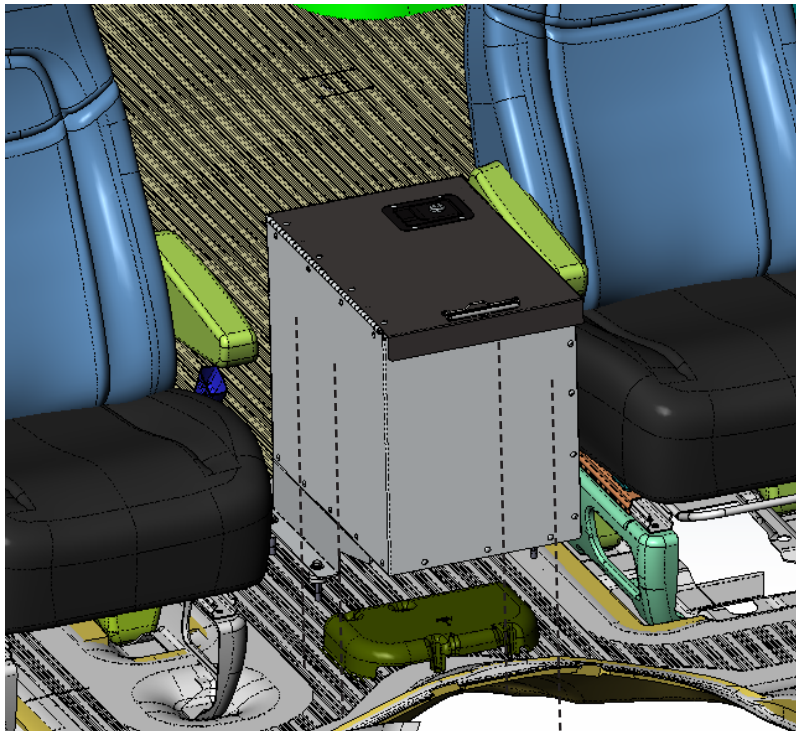
4x

	#94-130 1/4" Plusnut
---	----------------------

PHASE 2 – INSTALLATION

2.2 INSTALLATION

2.2.2 • Bolt the cab box and raiser in place.



TOOLS

- ☐ Cordless Impact
- ☐ 7/16" Socket

HARDWARE USED

4x



#90-130 Hex Bolt 1/4" x 2"



#98-118 Lock Washer



#98-106 Flat Washer

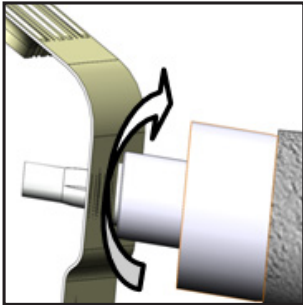


#98-157 Spacers
(QTY = GAP BETWEEN FLOOR AND END PANEL)

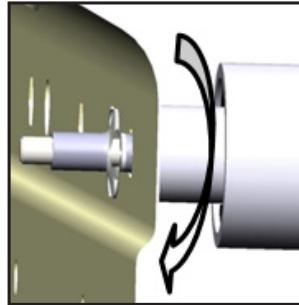
2.3 USING THE PLUSNUT TOOL

2.3.1 Using a Plusnut Gun.

- Put the Plusnut on the Plusnut gun.
- Secure the Plusnut to the hole by turning the gun forward until the Plusnut locks.
- Remove the gun by turning in reverse.



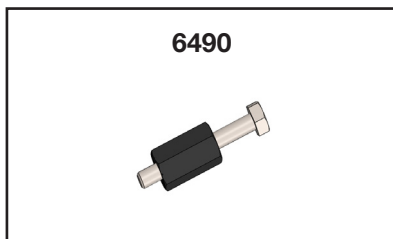
FORWARD



REVERSE



2.3.2 Using a Plusnut Tool.

- The hardware used for the 6490 plusnut tool is not included in the fastener bag.
- The 6490 plusnut tool can be ordered separately upon demand at no charge.



6490

HARDWARE USED

-  Flat washer 1/4"
-  Flat washer 1/4" 3/4" OD

TOOLS

- Cordless Impact
- 7/16" Socket
- 9/16" Wrench

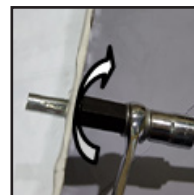
STEP 1:

Assemble the 6490 Plusnut tool with the hardware needed, Plusnut and the 9/16" wrench as shown.

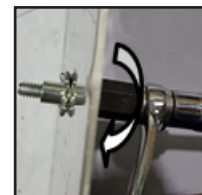


STEP 2:

Secure the Plusnut to the hole by turning the bolt forward using an impact with a 7/16" socket until the Plusnut locks. Then remove the bolt by turning the impact in reverse.



FORWARD



REVERSE



**You have successfully installed your
5058 Raised Base.**

**Thank you for doing business with us.
Ranger Design**

For any feedback or suggestions you may have, please contact: cs@rangerdesign.com

