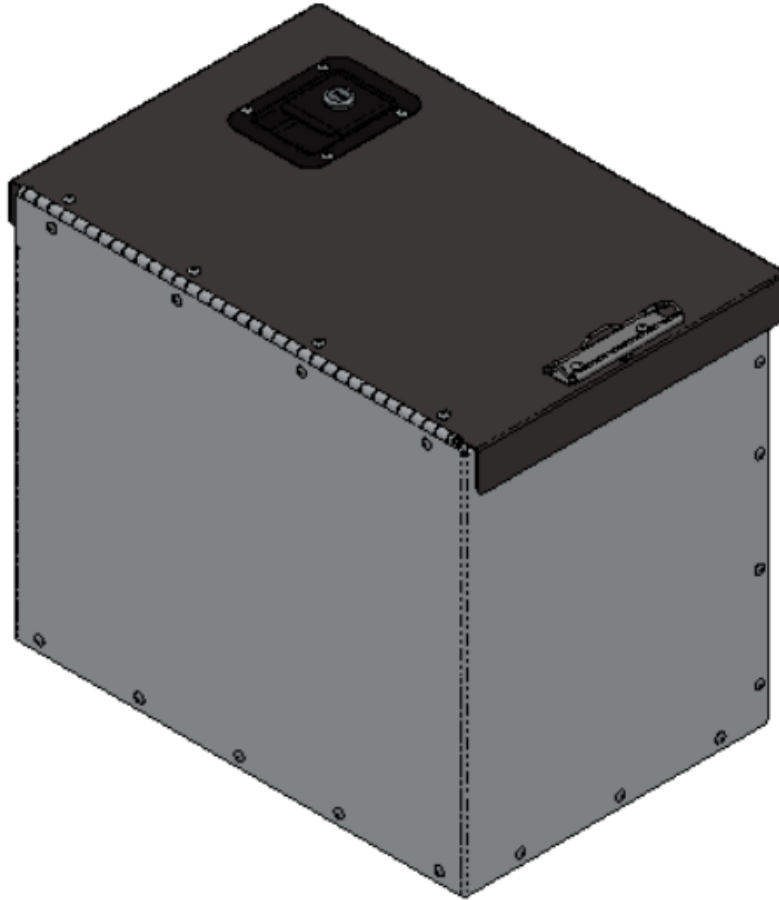


INSTALLATION GUIDE



5045 CAB Box



For virtual Install Guide, scan the QR code or visit:
<https://rangerdesign.com/products/lockable-van-cab-storage-box-18x12x16/>



QUICK START GUIDE

Phase 1 - Assembly

❑ 1.1 Setup.....3

Phase 2 - Installation

❑ 2.1 Regular Install.....4

SAFETY INSTRUCTIONS

WARNING

- Before the installation, carefully read the supplied installation guide to avoid possible injuries and damages resulting from incorrect installation. Always keep the installation guide in an accessible location at all times for reference during installation.
- Installers must always wear appropriate safety gear during installation. This may include but is not limited to gloves, steel toed shoes, and safety glasses.

CAUTION



- Follow all vehicle manufacturer instructions before attempting any installation.
- To prevent rust and other damages, do not drill into the factory floor panels.
- Before drilling for the tapping inserts, use a drill stop collar to prevent accidental drilling the van metal floor panel which may result in damage to components underneath, such as wiring harnesses, fuel tanks and battery modules.

REQUIRED ITEMS



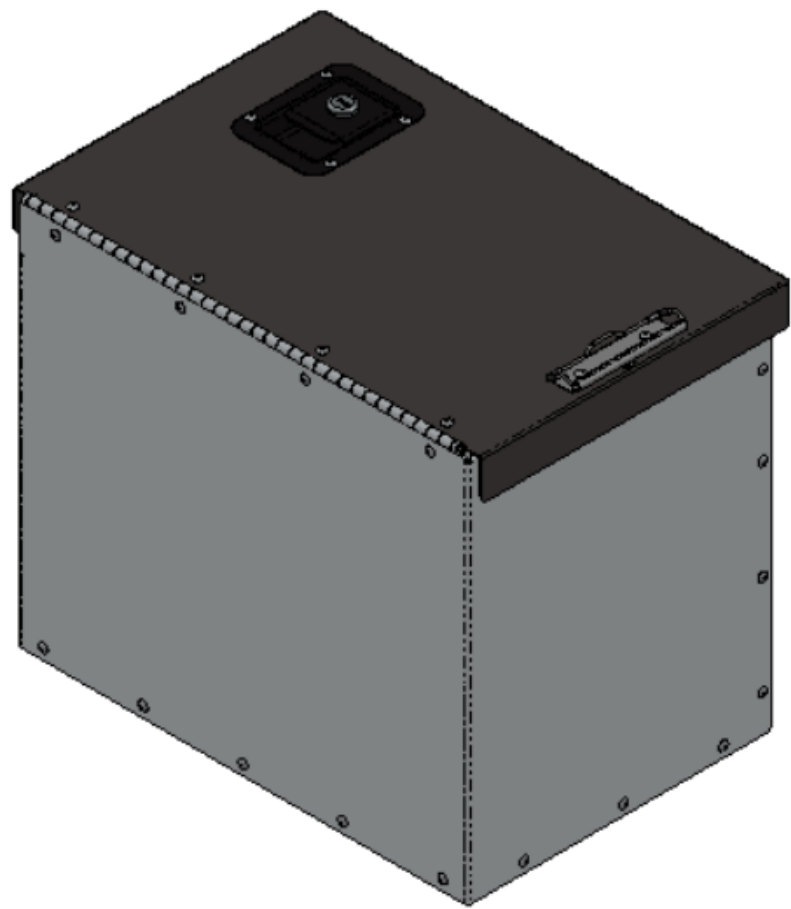
1 PERSON

- ❑ Cordless Impact
- ❑ Tape Measure
- ❑ 3/8" Socket

PHASE 1 – ASSEMBLY

1.1 SETUP

1.1.1 Unpack components; compare with the bill of materials.



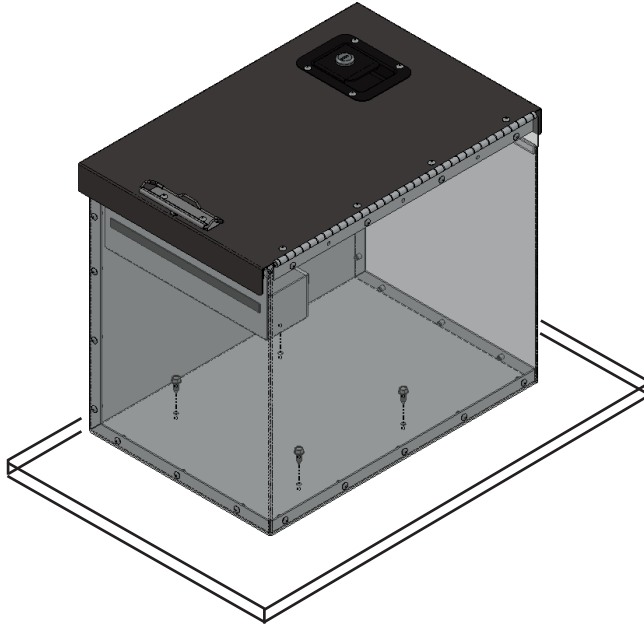
BILL OF MATERIAL

| Item No. | Description | Qty. |
|----------|----------------------|------|
| 5045 | CAB BOX | 1 |
| 96-5007 | INSTALL FASTENER KIT | 1 |

PHASE 2 – INSTALL

2.1 NO 5041 INSTALL

2.1.1 Place and screw your 5045 cab box on a flat surface.



TOOLS

- ☐ Cordless Impact
- ☐ 3/8" Driver Bit

HARDWARE USED

4x



#92-100 Screw #14 x 3/4"

**“You have successfully installed your Cab Box
Thank you for doing business with us.”**

For any feedback or suggestions you may have, please contact: cs@rangerdesign.com