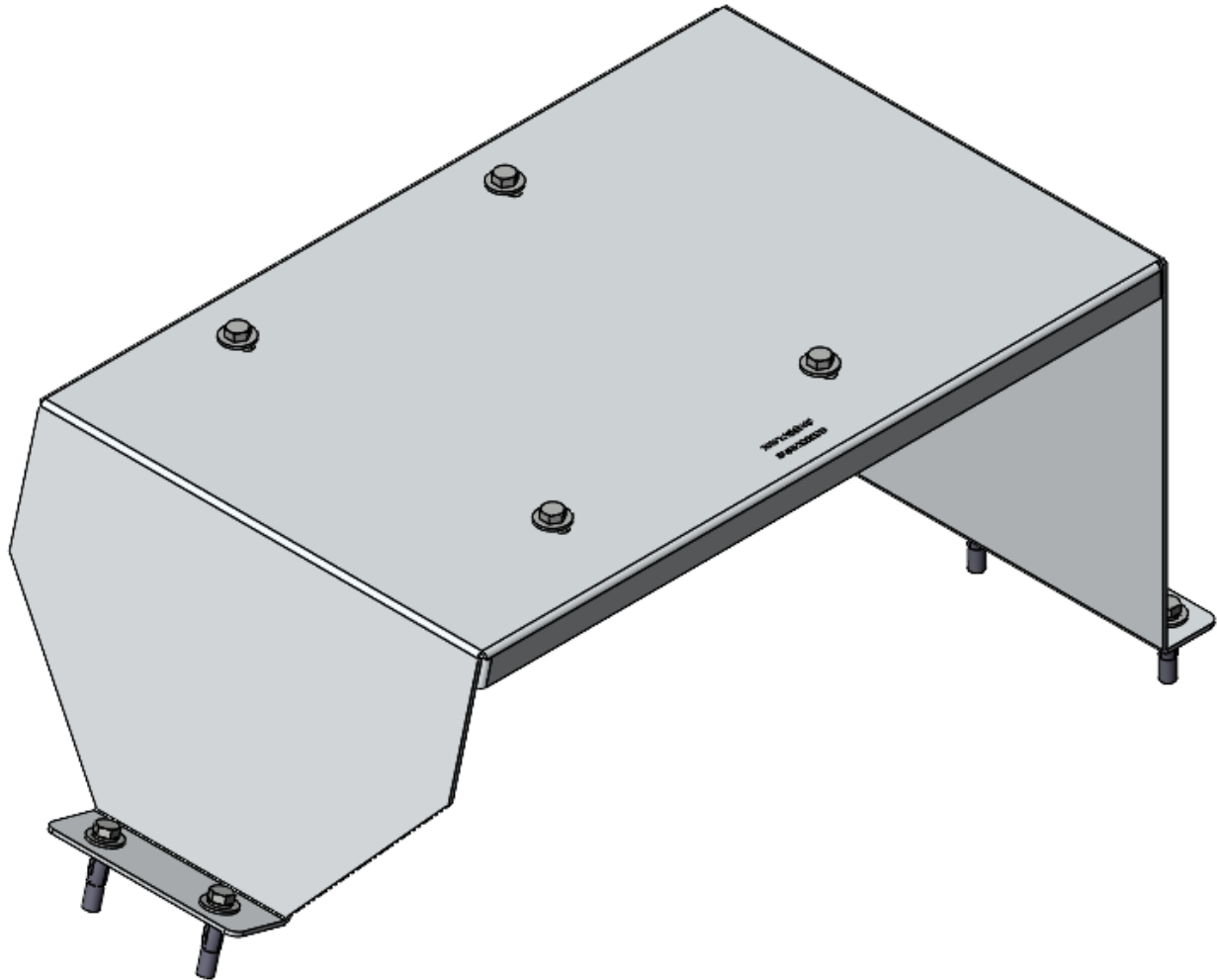
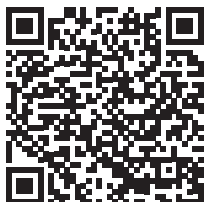


INSTALLATION GUIDE



5044 Raised Base for 5045 Cab Box

Sprinter



Scan the QR for the latest Install-Guide.





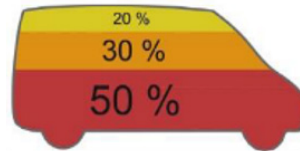
BEFORE YOU BEGIN

READ, UNDERSTAND, AND FOLLOW ALL WARNINGS AND INSTRUCTIONS BEFORE USING THIS PRODUCT. FAILURE TO FOLLOW THESE DIRECTIONS MAY RESULT IN PROPERTY DAMAGE, SERIOUS BODILY INJURY, AND/OR DEATH. RANGER DESIGN IS NOT RESPONSIBLE FOR ANY PROPERTY DAMAGE, PERSONAL INJURY, OR DEATH THAT OCCURRED WHILE USING ANY RANGER DESIGN PRODUCTS.



WARNING

- Failure to use Ranger Design-provided fasteners, brackets, and proper installation guidelines could increase risk of serious personal injury and/or death.
- If drilling is required to complete this installation: improper drilling can cause property damage to vehicles and could lead to electric shock, fire, or even death.
- If drilling is required to complete this installation: Ensure that drilling is only performed on areas of the vehicle allowed by the vehicle's Original Equipment Manufacturer's Body Builders Layout Book (or equivalent document).
- Prior to installation, inspect the vehicle to ensure that installation will not interfere with, or cause obstruction of, any critical components such as electrical wiring, fuel tanks, fuel-cells, locks, latches, etc.
- The installer or manufacturer is responsible for ensuring anchorages are installed onto suitable wall and floor structures; wall and floor strength must meet applicable performance requirements.
- Do not install systems into any weak or unsound materials such as plastics, woods, thin-walled metals, etc. without proper reinforcement.
- Do not install this product where it could interfere with the deployment of airbags. Failure to comply could result in death or serious injury.
- Do not install this product where it could ingress on the Transit Occupant Protection Zone. Failure to comply could result in death or serious injury.
- Incorrect installation could cause water leaks, electric shock or fire.
- Any cargo vehicle with any cargo or equipment should use a certified partition. See Ranger Design website for some partition options. (<https://rangerdesign.com/>)
- Mountings rails are recommended for any attachment to the vehicle walls.
- All items in the cargo area should be properly secured and partition doors closed while the vehicle is in motion.
- Check your vehicle's tare weight and remaining load capacity with all the equipment installed. Never exceed the maximum Gross Vehicle Weight Rating (GVWR), Gross Axle Weight Ratings (GAWRs), or other maximum loads permitted by the vehicle's Original Equipment Manufacturer (OEM) and required by law.
- The heaviest items must be placed towards the bottom of the vehicle, while the lightest ones can be arranged upwards. Vehicle cargo loading weight proportion should follow the following guidelines:



- The final alterer and/ or modifier should review the warning sheet with the customer before the vehicle is released to the customer or for general use. These instructions should remain with the vehicles at all times.
- Any modification or unintended use of this product voids any warranty and could create a hazardous condition.
- Ranger Design provides recommended assembly and installation instructions which should be followed to ensure correct operation. Failure to do so could result in invalidating the product's compliance, warranty and cause injury. Notwithstanding, the final stage vehicle alterer and/or modifier is responsible for the integration, installation, and compliance of the product in its final location to all applicable regulations and standards. Failure to maintain compliance of the vehicle to applicable regulations and standards could be punishable by law. Alterers and/or modifiers should consult with all local authorities prior to commissioning.



CAUTION

- Drilling is required to complete this installation. Before drilling, ensure that you will not hit any critical parts of the vehicle like the gas tank, wiring harness, or hose. Consult the vehicle OEM documentation as necessary. When drilling, use a drill collar to reduce the risk of damage to the vehicle.
- Any materials, padding, or glazing installed in the vehicle must comply with FMVSS/CMVSS 201/205/302, as applicable.
- In the event of a motor vehicle accident or collision where a Ranger system has been installed, especially ones where the vehicle structure is damaged and/or the air bags deploy and/or the vehicle has been towed, the system must be inspected to ensure continued soundness and safety before returning the vehicle to service. Damaged components should be replaced as necessary.
- All system components should be regularly inspected, cleaned, and maintained pursuant to Ranger guidelines.

QUICK START GUIDE

Phase 1 - Assembly

❑ 1.1 Setup.....	3
------------------	---

Phase 2 - Installation

❑ 2.1 Assembly With 5045 Cab Box.....	4
.....	5
❑ 2.2 Install In Van.....	6

REQUIRED ITEMS



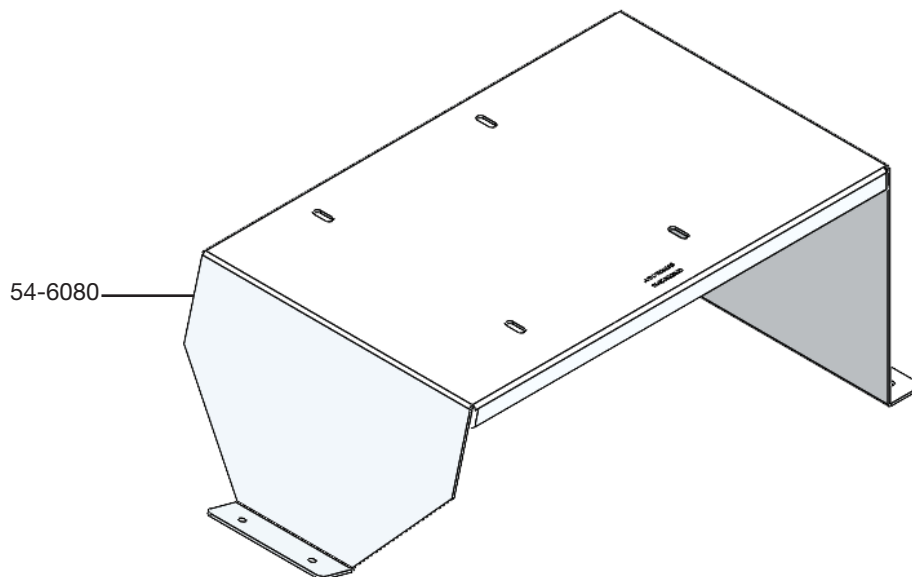
**1
PERSON**

- ❑ Cordless Impact
- ❑ Cordless Drill
- ❑ Tape Measure
- ❑ Marker
- ❑ 7/16” Hex Socket
- ❑ 1/2” Drill Bit w/ Drill Collar (Set at 1/2” Deep)
- ❑ Knife
- ❑ Plusnut Tool / Plusnut Gun (1/4”)

PHASE 1 – ASSEMBLY

1.1 SETUP

1.1.1 Unpack all the components and compare with the bill of materials.



1.1.2 Verify all parts are present.

BILL OF MATERIALS

Item No.	Description	Qty.
54-6080	Raised Base, Cab Box, Sprinter	1
90-5020	Install Fastener Kit	1

1.1.3 Fastener kits.

90-5020 Fastener Kit

4x		# 90-108	Hex Bolt 1/4"-20 x 5/8" ZINC
5x		# 90-114	Hex Bolt 1/4"-20 x 1" ZINC
4x		# 94-112	Serrated Nut 1/4"-20 ZINC
5x		# 94-130	Plusnut 1/4"-20
9x		# 98-112	Flat Washer 1/4", 3/4" OD ZINC
5x		# 98-118	Lock Washer 1/4" ZINC

Fastener Install

4x



#90-108 Hex Bolt 1/4"-20 x 5/8"



#98-112 Flat Washer



#94-112 Serrated Nut

5x



#90-114 Hex Bolt 1/4" x 1"



#98-118 Lock Washer



#98-112 Flat Washer



#94-130 1/4" Plusnut

2.1 ASSEMBLE WITH 5045 CAB BOX

NOTE: 5045 Cab Box is a separate unit.



- ☐ Cordless Impact
- ☐ 7/16" Socket

4x



#90-108 Hex Bolt 1/4"-20 x 5/8"



#98-112 Flat Washer



#94-112 Serrated Nut

PHASE 2 – INSTALLATION

2.2 INSTALLATION

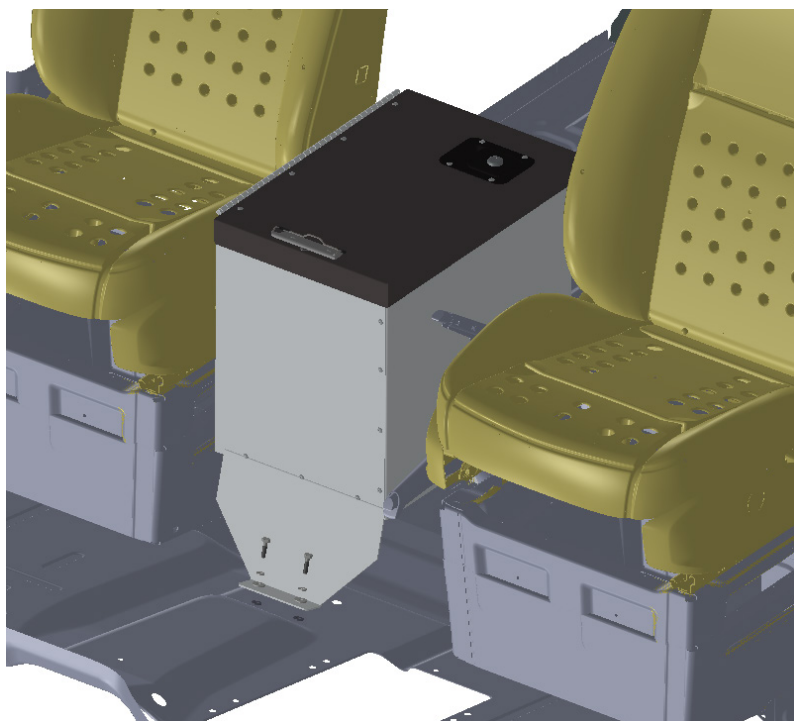
2.2.1 • Place the cab box raiser between the front seats.

- Adjust the position forward or backward to avoid any seat armrests or mechanical handbrakes levers.
- The front of the cab box should be 9" back from the center consol cup holders.



WARNING: Verify with the vehicle manufacturer before drilling through the floor that no wires, cables or other items are underneath. Adjust the position of the cab box raiser to avoid any items underneath.

- Mark the location of the 5 holes.



TOOLS

- ☐ Cordless drill
- ☐ 1/2" Drill Bit
- ☐ Plusnut tool
- ☐ 7/16" Socket

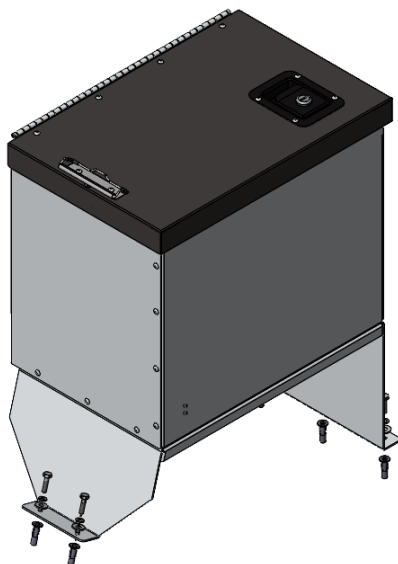
HARDWARE USED

4x



#94-130 1/4" Plusnut

2.2.2 • Lower the cab box and raiser to the floor. Secure with fasteners.



TOOLS

- ☐ Cordless impact
- ☐ 7/16" Driver Bit

HARDWARE USED

5x



#90-114 Hex Bolt 1/4" x 1"



#98-118 Lock Washer

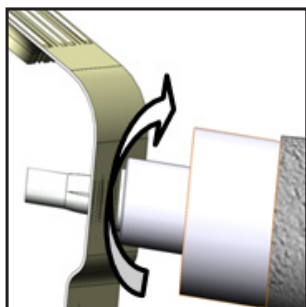


#98-112 Flat Washer

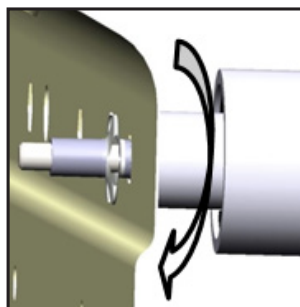
2.3 USING THE PLUSNUT TOOL

2.3.1 Using a Plusnut Gun.

- Put the Plusnut on the Plusnut gun.
- Secure the Plusnut to the hole by turning the gun forward until the Plusnut locks.
- Remove the gun by turning in reverse.



FORWARD

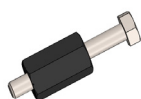


REVERSE



2.3.2 Using a Plusnut Tool.

- The hardware used for the 6490 plusnut tool is not included in the fastener bag.
- The 6490 plusnut tool can be ordered separately upon demand at no charge.




6490



HARDWARE USED

-  Flat washer 1/4"
-  Flat washer 1/4" 3/4" OD

TOOLS

-  Cordless Impact
-  7/16" Socket
-  9/16" Wrench

STEP 1:

Assemble the 6490 Plusnut tool with the hardware needed, Plusnut and the 9/16" wrench as shown.



STEP 2:

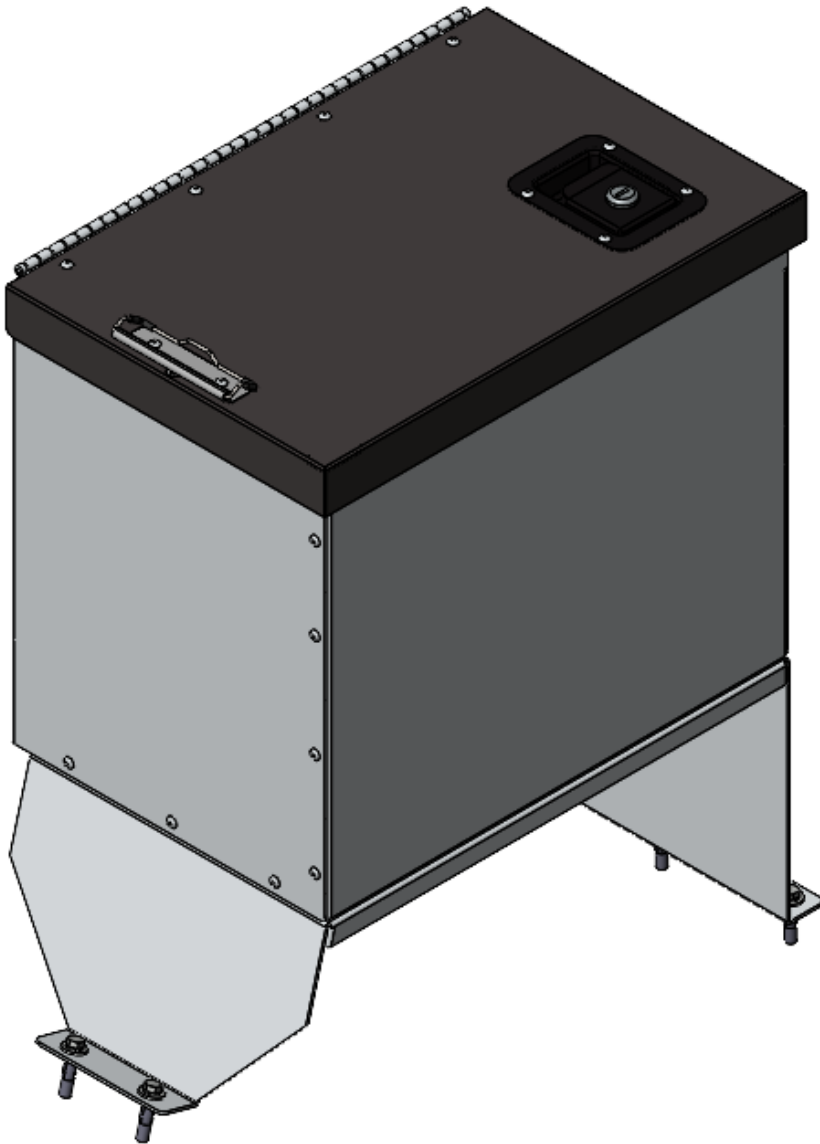
Secure the Plusnut to the hole by turning the bolt forward using an impact with a 7/16" socket until the Plusnut locks. Then remove the bolt by turning the impact in reverse.



FORWARD



REVERSE



**You have successfully installed your
5044 Raised Base.**

Thank you for doing business with us.

For any feedback or suggestions you may have, please contact: cs@rangerdesign.com

