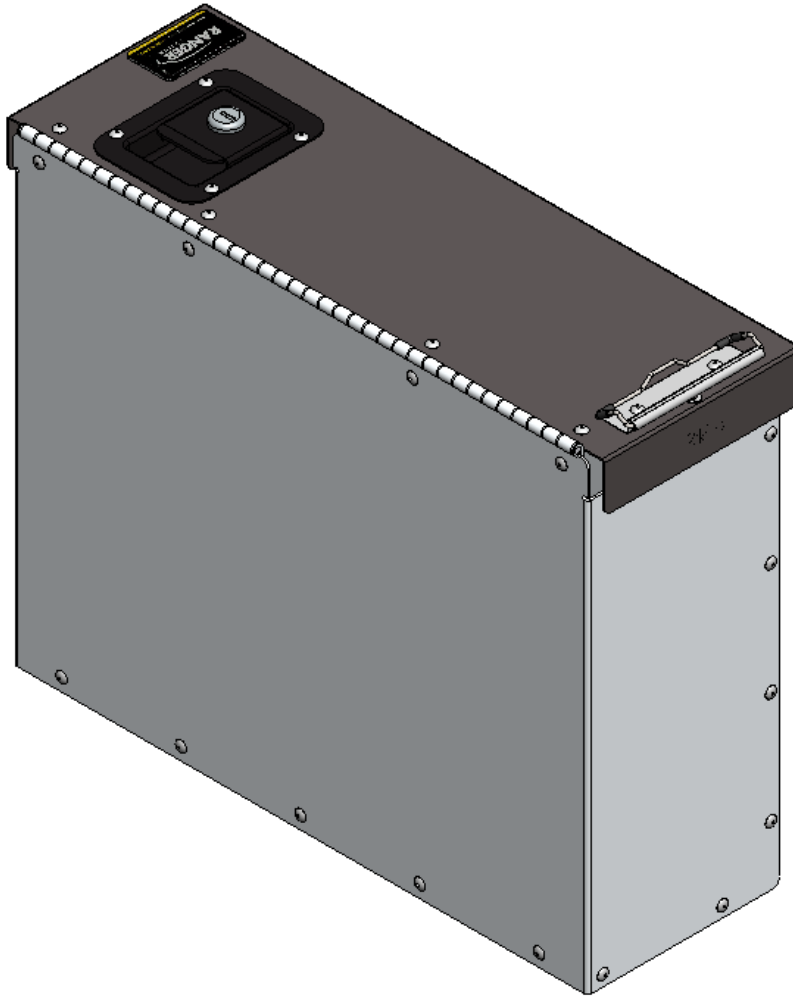


INSTALLATION GUIDE



5040 CAB Box



For virtual Install Guide, scan the QR code or visit:
<https://rangerdesign.com/products/van-cab-storage-box/>



QUICK START GUIDE

Phase 1 - Assembly

❑ 1.1 Setup.....	3
------------------	---

Phase 2 - Installation

❑ 2.1 Regular Install.....	4
❑ 2.2 Accessory Install.....	4

SAFETY INSTRUCTIONS

WARNING

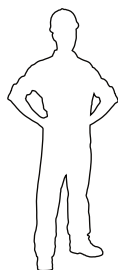
- Before the installation, carefully read the supplied installation guide to avoid possible injuries and damages resulting from incorrect installation. Always keep the installation guide in an accessible location at all times for reference during installation.
- Installers must always wear appropriate safety gear during installation. This may include but is not limited to gloves, steel toed shoes, and safety glasses.

CAUTION



- Follow all vehicle manufacturer instructions before attempting any installation.
- To prevent rust and other damages, do not drill into the factory floor panels.
- Before drilling for the tapping inserts, use a drill stop collar to prevent accidental drilling the van metal floor panel which may result in damage to components underneath, such as wiring harnesses, fuel tanks and battery modules.

REQUIRED ITEMS



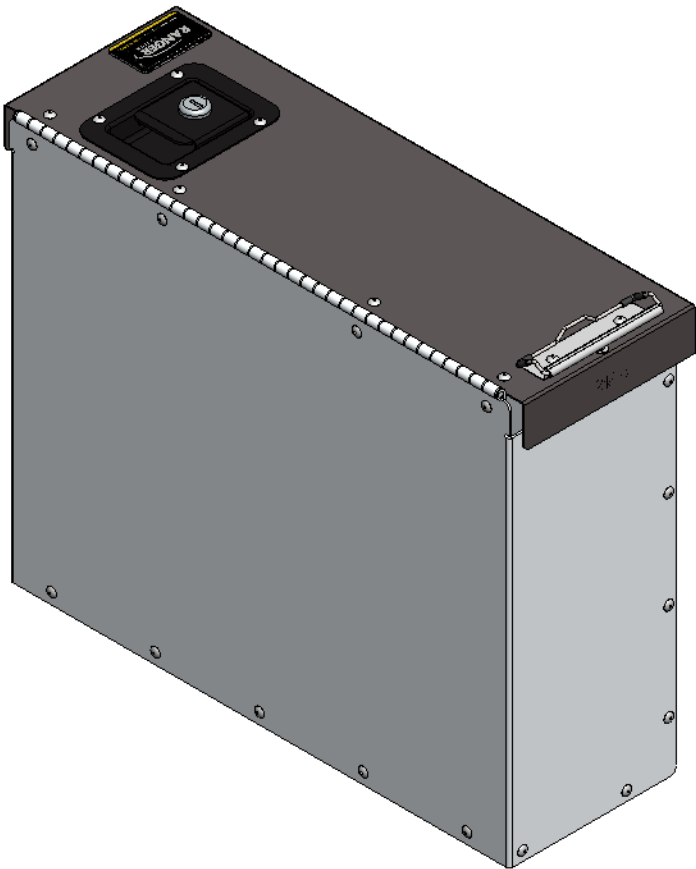
1 PERSON

- ❑ Cordless Impact
- ❑ Tape Measure
- ❑ 3/8" Socket
- ❑ 1/2" Socket

PHASE 1 – ASSEMBLY

1.1 SETUP

1.1.1 Unpack components; compare with the bill of materials.



BILL OF MATERIAL

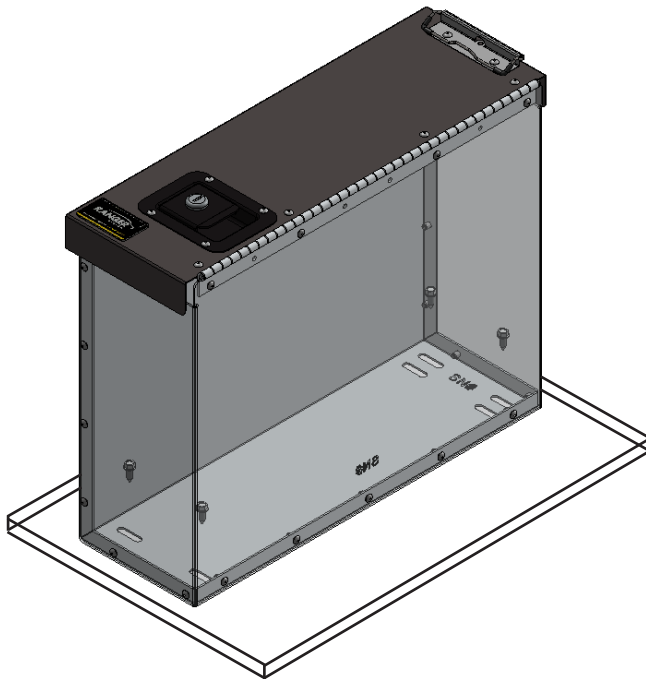
Item No.	Description	Qty.
5040	CAB BOX	1
96-5007	INSTALL FASTENER KIT	1

PHASE 2 – INSTALL

2.1 NO 5041 INSTALL

2.1.1 Place and screw your 5040 cab box on a flat surface.

NOTE: You need 5041 for Ford Transit 5040 cab box install.



TOOLS

- ☐ Cordless Impact
- ☐ 3/8" Driver Bit

HARDWARE USED

4x



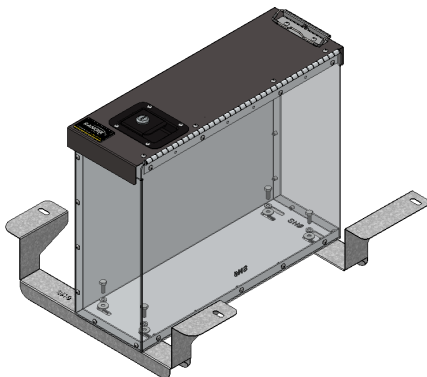
#92-100 Screw #14 x 3/4"

PHASE 2 – INSTALL

2.2 ON 5041 INSTALL

2.2.1 Attach the 5040 cab box on top of 5041 brackets.

NOTE: 5041 separate unit.



TOOLS

- ☐ Cordless Impact
- ☐ 1/2" Driver Bit

HARDWARE USED

4x THIS HARDWARE IS IN 5041



#90-212 Hex Bolt 5/16" x 1-1/4"



#98-122 Lock Washer



#98-116 Flat Washer



#94-132 Plusnut

**“You have successfully installed your Cab Box
Thank you for doing business with us.”**

For any feedback or suggestions you may have, please contact: cs@rangerdesign.com