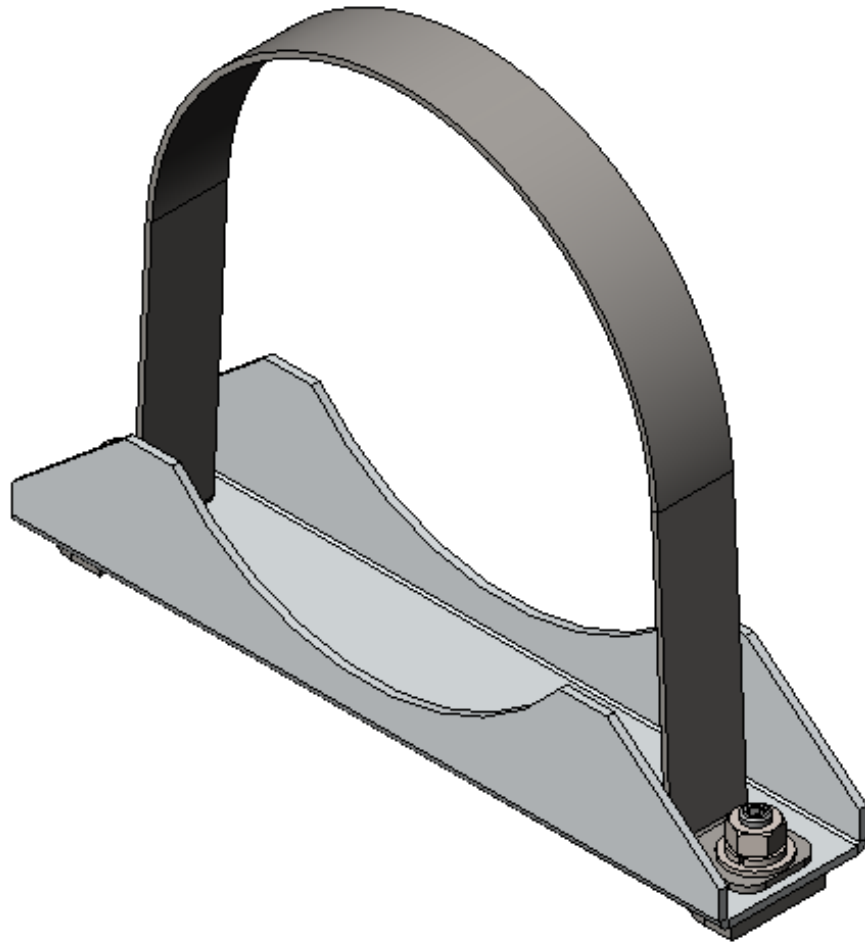


INSTALLATION GUIDE



16-U6078 TRANSPORT TUBE STRAP KIT



QUICK START GUIDE

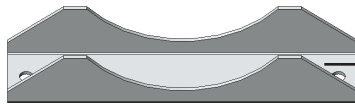
Phase 1 - Assembly

- ☐ 1.1.1 SETUP (VERIFY ALL PARTS ARE PRESENT)..... 2
- ☐ 1.2.1 ASSEMBLY..... 3 TO 4

PHASE 1 – ASSEMBLY

1.1 SETUP

1.1.1 Verify all parts are present.



70-308

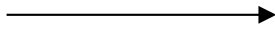


70-309


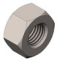



BILL OF MATERIALS

Item No.	Description	Qty.
70-308	CRADLE, TRANSPORT TUBE	1
70-309	STRAP, TRANSPORT TUBE	1
96-6078	CUSTOMER INSTALL FASTENER KIT	1






96-6078



Fastener Assembly

- 2x  # 90-006 Socket Set Screw 5/16"-18 x 1"
- 2x  # 94-105 Hex Nut 5/16" SS316 WAX
- 2x  # 94-250 Channel Nut 5/16"
- 2x  # 98-117 Flat Washer 5/16" OD, 3/4" SS18-8
- 2x  # 98-123 Lock Washer 5/16" SS304

2x

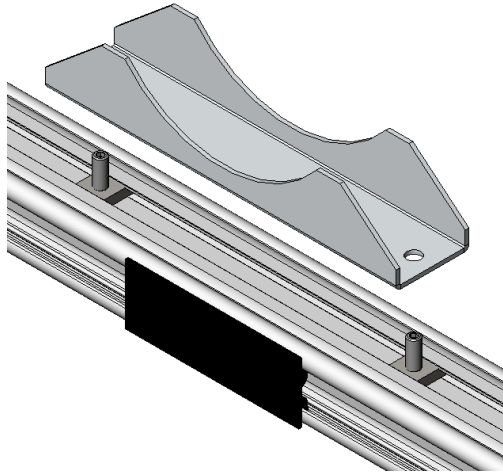
-  #94-105 Hex Nut 5/16"
-  #98-123 Lock Washer 5/16"
-  #98-117 Flat Washer 5/16"
-  #90-006 Socket Set Screw 1"
-  #94-250 Channel Nut 5/16"

PHASE 1 – ASSEMBLY

1.2 ASSEMBLY

- 1.2.1**
- Place 2 channel nuts on the top of the crossbar.
 - Attach socket set screw to the channel nut, then add the transport tube cradle on top.

NOTE: Crossbars are not included in the kit.

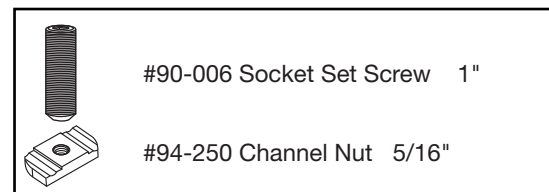


TOOLS

- Allen key 5/32"

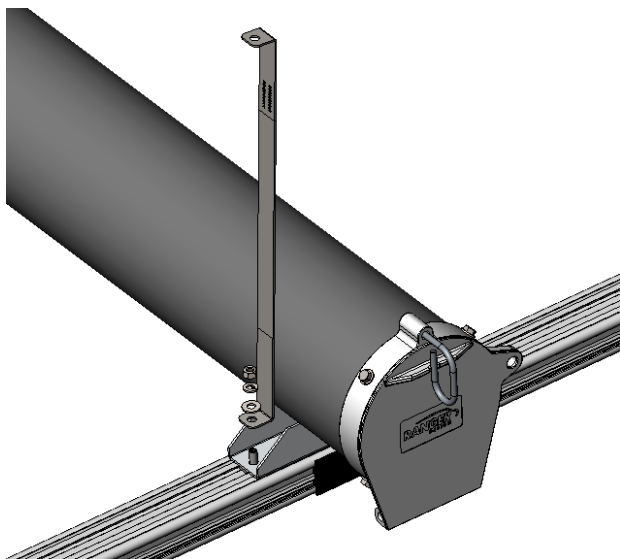
FASTENERS USED

2x



- 1.2.2** Place the transport tube on to the transport tube cradle, then attach one end of the transport tube strap to the transport tube cradle using the socket set screw.

NOTE: Tube is not included in the kit.

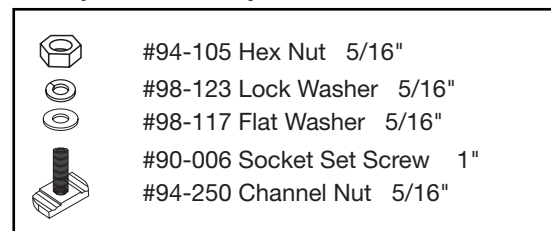


TOOLS

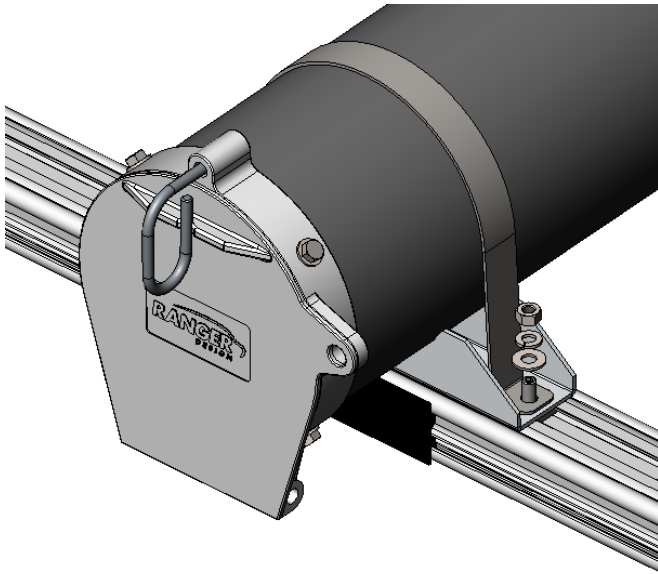
- Ratchet
- 1/2" Socket

FASTENERS USED

1x (17 ft • lbs)



1.2.3 Bend the transport tube strap around the transport tube, then attach the other end of the transport tube strap to the transport tube cradle using the socket set screw.



TOOLS

- Ratchet
- 1/2" Socket

FASTENERS USED

1x (17 ft • lbs)






	#94-105 Hex Nut 5/16"
	#98-123 Lock Washer 5/16"
	#98-117 Flat Washer 5/16"
	#90-006 Socket Set Screw 1"
	#94-250 Channel Nut 5/16"

Image below shows a clamp rack with transport tube.



“Thank you for doing business with us.”

For any feedback or suggestions you might have, please contact: cs@rangerdesign.com

