

INSTALLATION GUIDE



1505-FTL Cargo Rack

Long Ford Transit 148" and 148" Ext Wheelbase (Aluminum)



QUICK START GUIDE

Phase 1 - Assembly

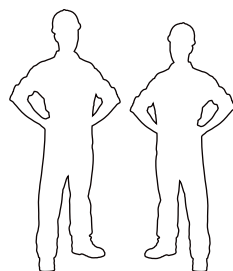
❑ 1.1 Setup.....	3 - 4
❑ 1.2 Cargo Rack Assembly.....	5 - 6

Phase 2 - Installation

❑ 2.1 Mounting Tracks Installation.....	7
❑ 2.2 Cargo Rack Installation.....	8 - 11

REQUIRED ITEMS

NOTE: Use Sawhorses if possible, or use the box as a flat protective surface on the ground or table.



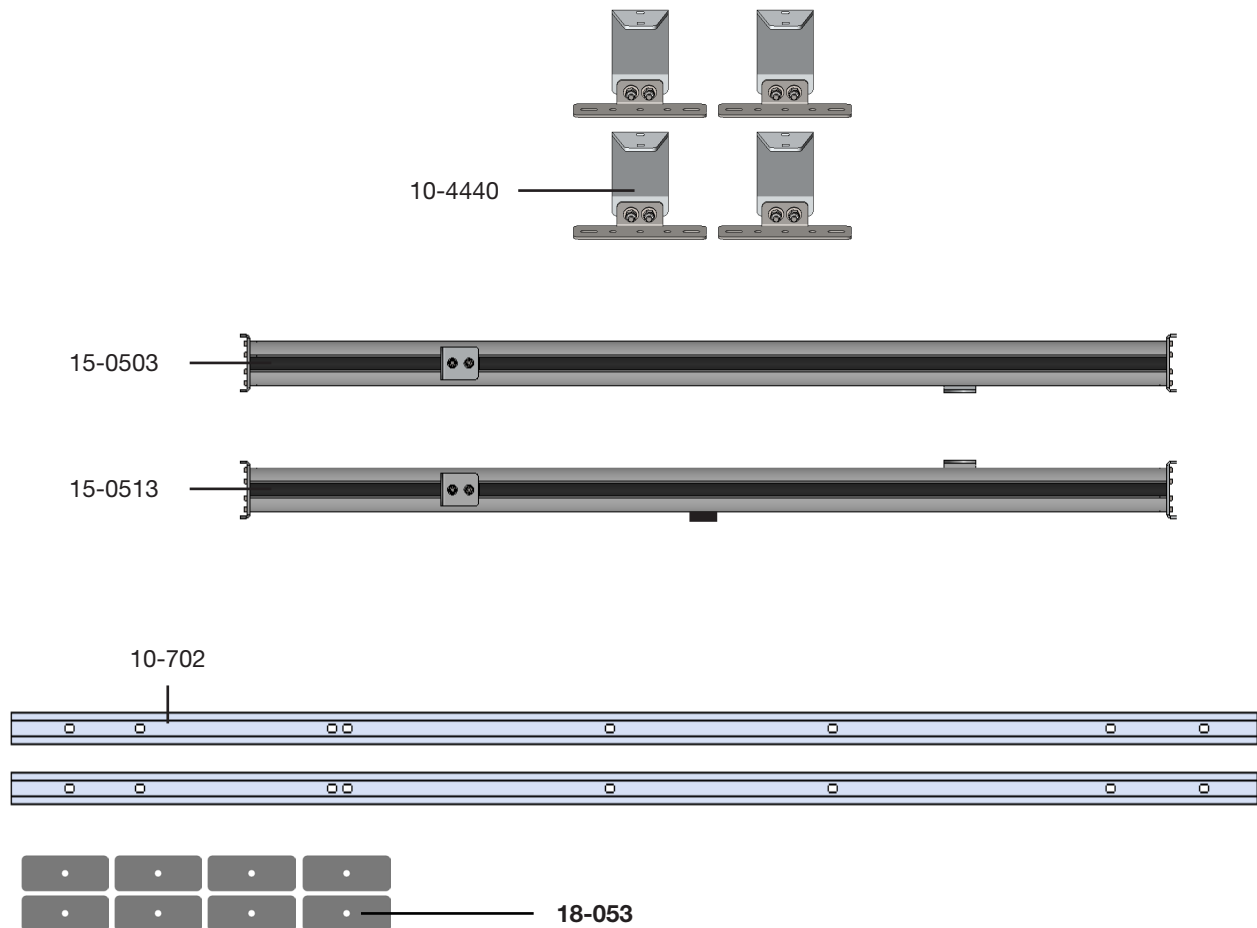
**2
PERSONS**

- ❑ Cordless Impact
- ❑ Ratchet
- ❑ Tape Measure
- ❑ Marker
- ❑ Ladder
- ❑ Cutter
- ❑ 1/2" Socket
- ❑ 13mm Socket
- ❑ Sawhorse (Optional)
- ❑ Box
- ❑ Knife
- ❑ 1/2" Wrench
- ❑ Silicone

PHASE 1 – ASSEMBLY

1.1 SETUP

1.1.1 Unpack components; compare with the bill of materials.



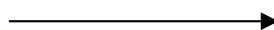
1.1.2 Verify all parts are present.

BILL OF MATERIALS





Item No.	Description	Qty.
18-053	Spacer	8
10-702	Mounting Track	2
10-4440	“C” Foot	4
15-0503	Front Crossbar	1
15-0513	Rear Crossbar	1
94-1008	Assembly Fastener Kit	1
96-1004	Install Fastener Kit	1

1.1.3 Fastener kits.

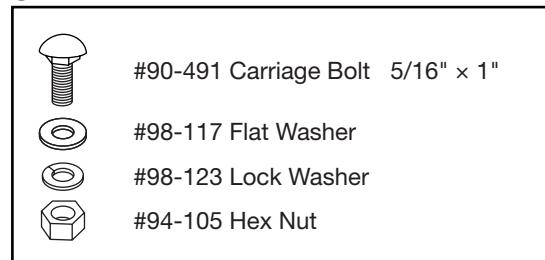
94-1008 Fastener Kit



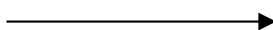
Fastener Assembly

- 8x  # 90-491 Carriage Bolt
5/16"-18 x 1"
SS304
- 8x  # 94-105 Hex Nut
5/16"-18
SS316wax
- 8x  # 98-117 Flat Washer
5/16", O.D 3/4"
SS18-8
- 8x  # 98-123 Lock Washer
Regular 5/16"
SS304

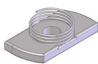


8x



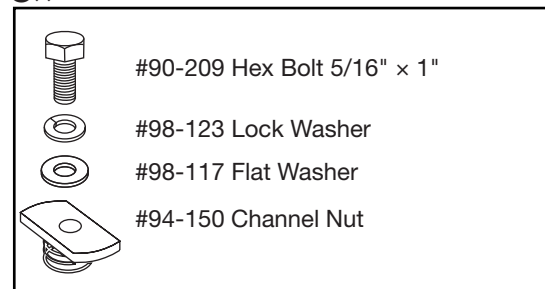
96 - 1004 Fastener Kit



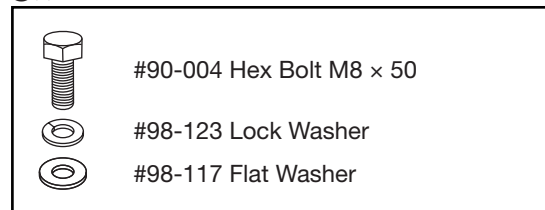
Fastener Assembly

- 8x  # 90-209 Hex Bolt
5/16"-18 x 1"
SS304
- 8x  # 90-004 Hex Bolt
M8 50
- 8x  # 94-150 Channel Nut
5/16"
- 16x  # 98-117 Flat Washer
5/16", OD 3/4"
SS18-8
- 16x  # 98-123 Lock Washer
5/16"
SS304

8x



8x



PHASE 1 – ASSEMBLY

1.2 CARGO RACK ASSEMBLY

1.2.1 Slide carriage bolts on the bottom face of the crossbars.

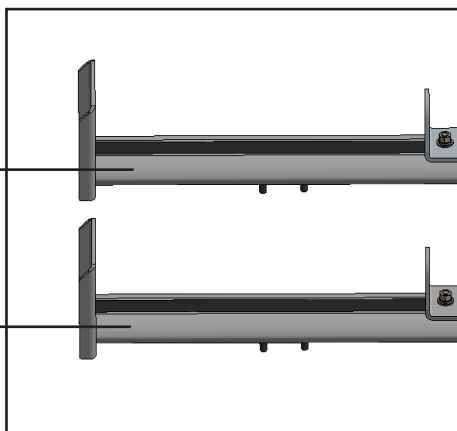
NOTE: The track plug must be removed from the underneath of the front crossbar, and reinstalled after the feet have been installed in the final position, see 2.2.4.



DRIVER SIDE

Front crossbar

- Slide 2 pcs. of 1" carriage bolts.



Rear crossbar

- Slide 2 pcs. of 1" carriage bolts.

HARDWARE USED

4x

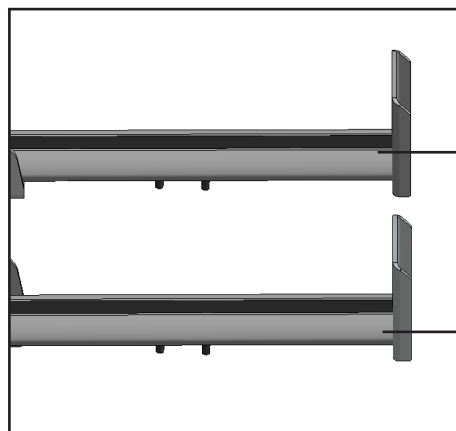


#90-491 Carriage Bolt
5/16" x 1" SS304

PASSENGER SIDE

Front crossbar

- Slide 2 pcs. of 1" carriage bolts.



Rear crossbar

- Slide 2 pcs. of 1" carriage bolts.

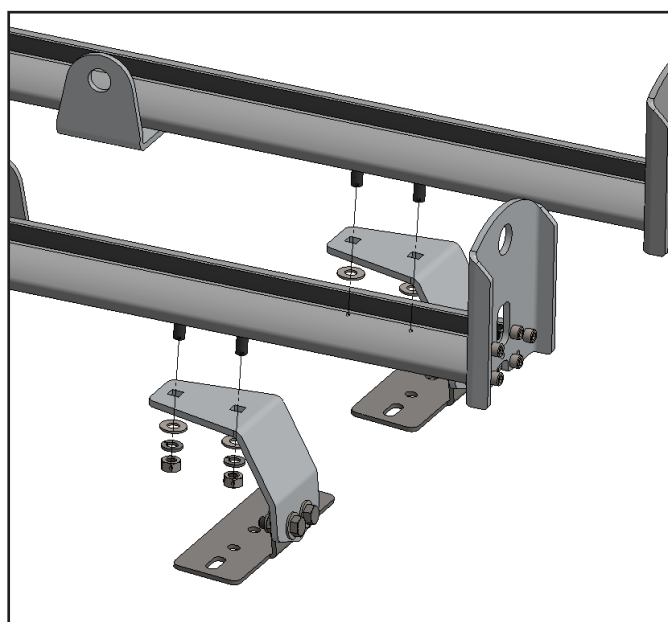
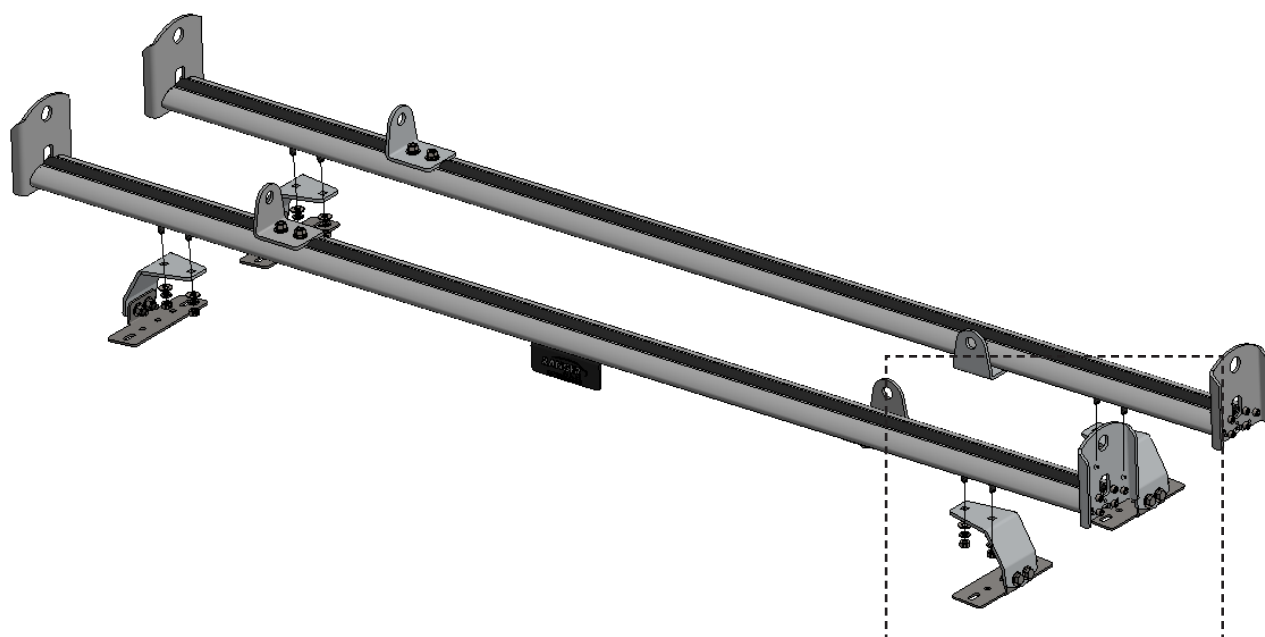
HARDWARE USED

4x



#90-491 Carriage Bolt
5/16" x 1" SS304

1.2.2 Install the feet on the Front, and Rear Crossbars.



HARDWARE USED

8x HAND-TIGHTEN THE NUTS.



Carriage bolts are already on the crossbars.



#98-117 Flat Washer



#98-123 Lock Washer



#94-105 Hex Nut

PHASE 2 – INSTALLATION

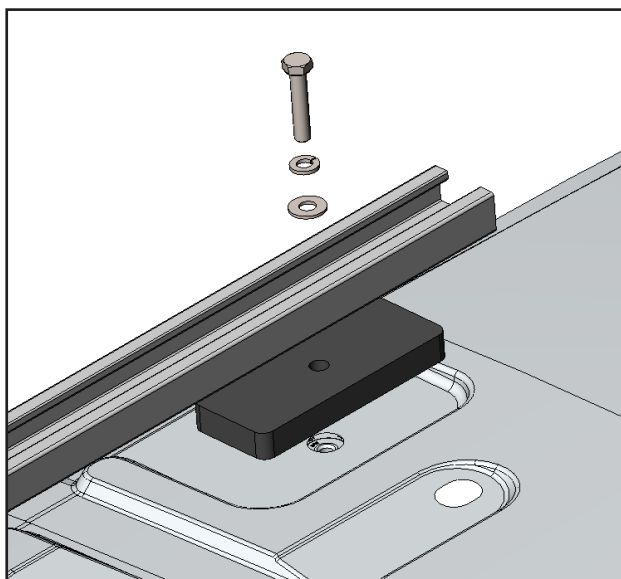
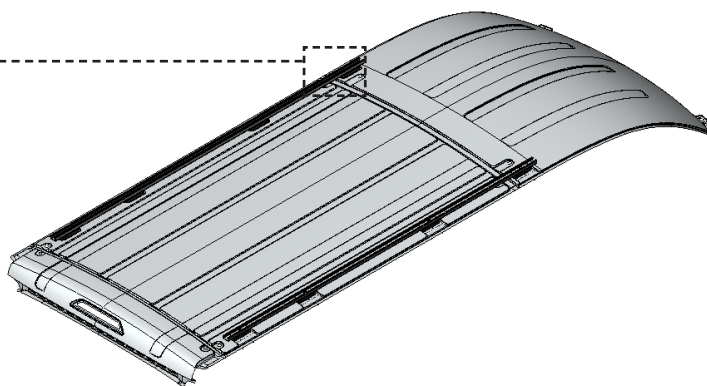
2.1 MOUNTING TRACKS INSTALLATION

- 2.1.1**
- Remove existing plugs on the vehicle roof holes.
 - Use a tap (M8 - 1.25) to remove the excess dirt/paint in the holes of the van.
 - **Apply a bead of silicone around the bolts and holes**, then fasten the tracks to the roof.

Mounting Track Orientation

REAR

FRONT



TOOLS

- Cordless Impact
- 13mm Socket

FASTENERS USED

8x



#90-004 Hex Bolt M8 x 50



#98-123 Lock Washer



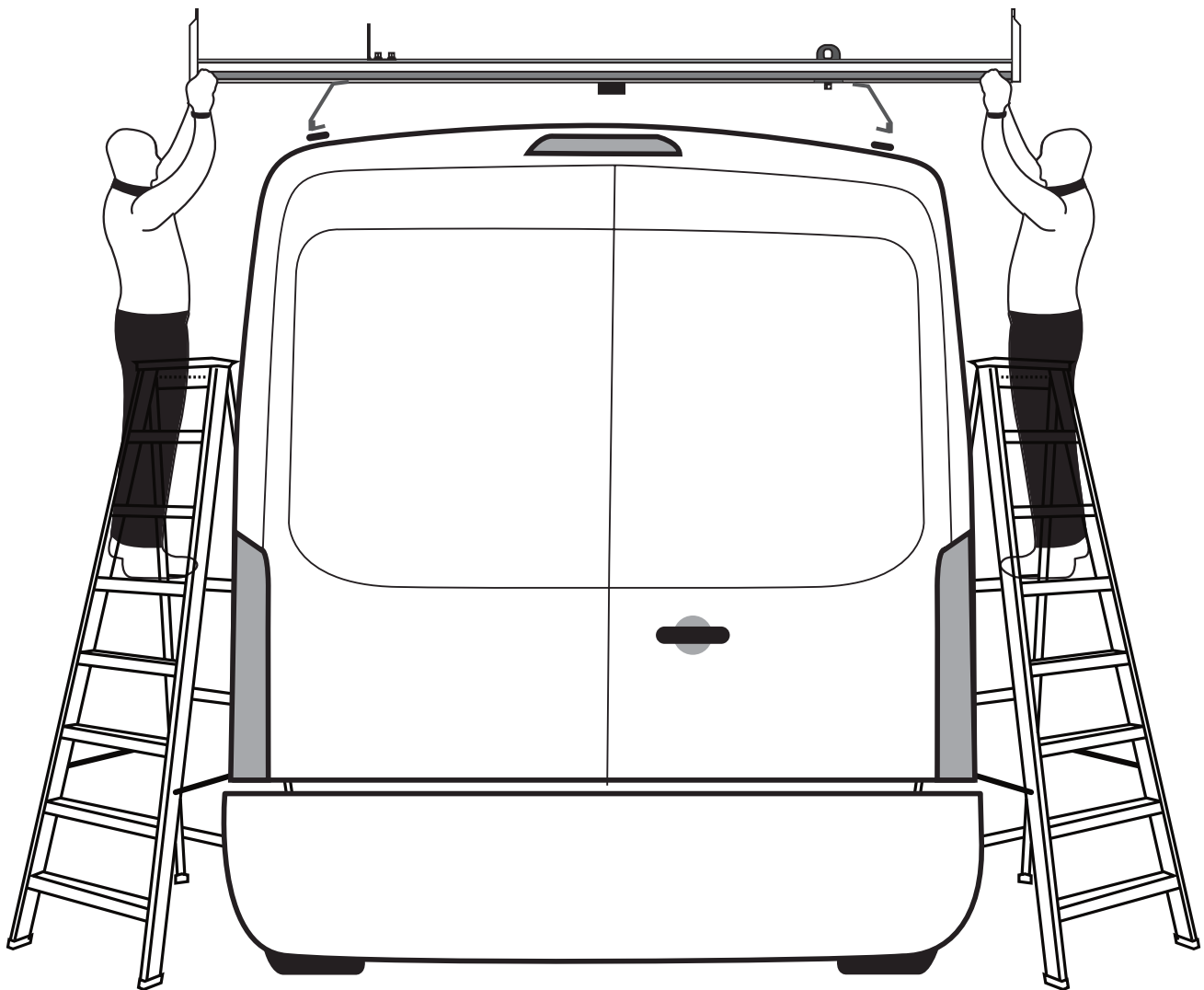
#98-117 Flat Washer

PHASE 2 – INSTALLATION

2.2 CARGO RACK INSTALLATION

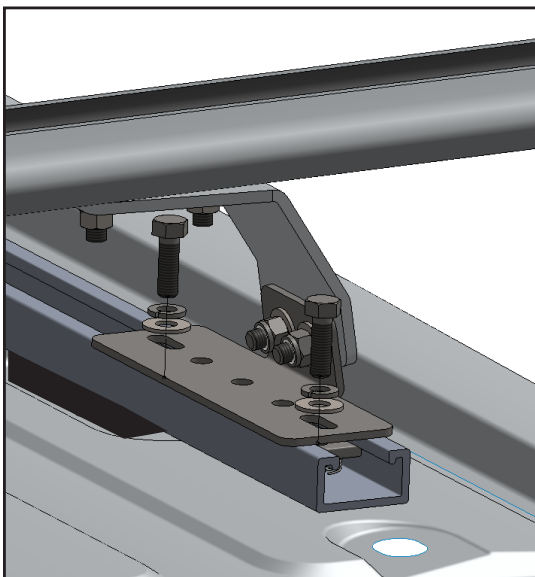
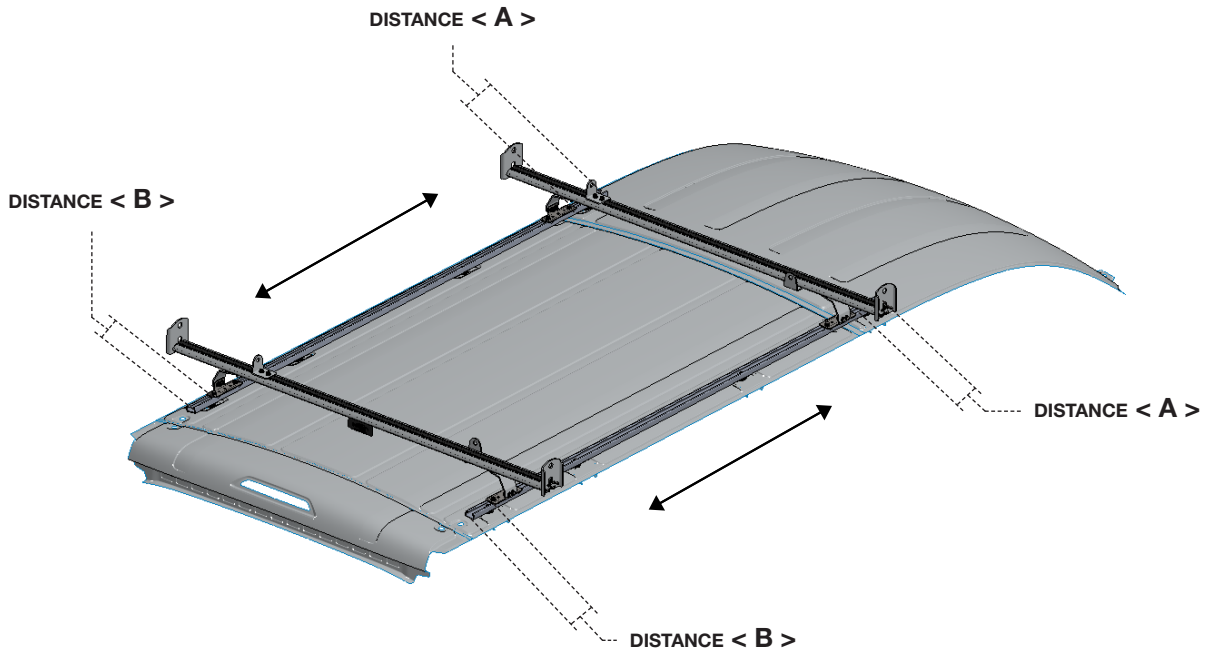
2.2.1 Position the front and rear crossbars (**minimum two persons**) on the vehicle so that the feet are on the mounting tracks.

Cargo Rack



- 2.2.2** • Make sure the crossbars are parallel to each other at the desired distance apart, then attach all the “C” feet to the mounting tracks.
- Tighten the bolts that attach the foot plate to the ladder rack leg.

DISTANCE < FOOT TO END OF TRACK >

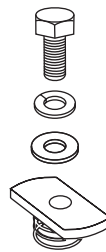


TOOLS

- ☐ Ratchet
- ☐ 1/2" Socket
- ☐ Tape Measure

FASTENERS USED

8x



#90-209 Hex Bolt 5/16" x 1"

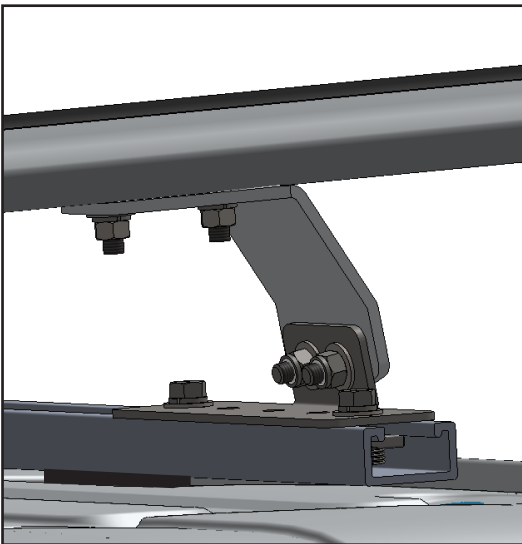
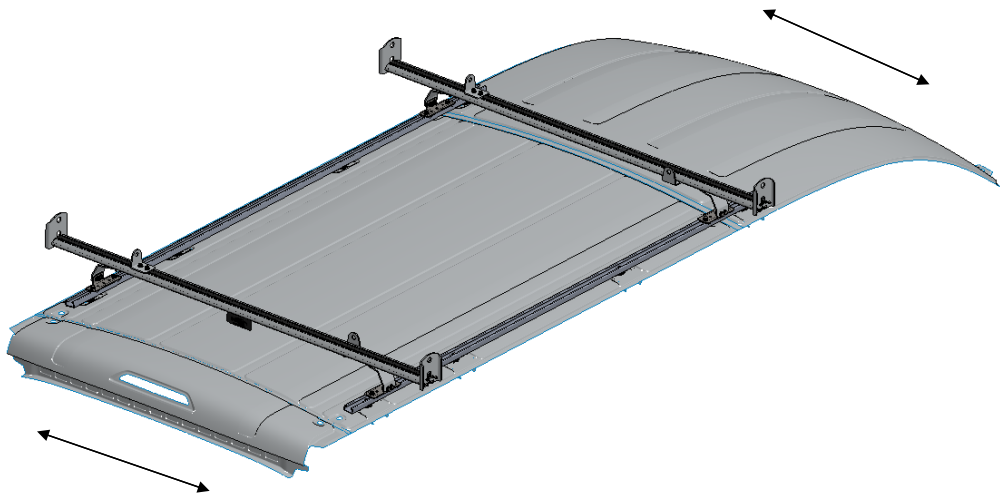
#98-123 Lock Washer

#98-117 Flat Washer

#94-150 Channel Nut

2.2.3 Center the crossbars on the vehicle, then tighten all the “C” feet to the crossbars.

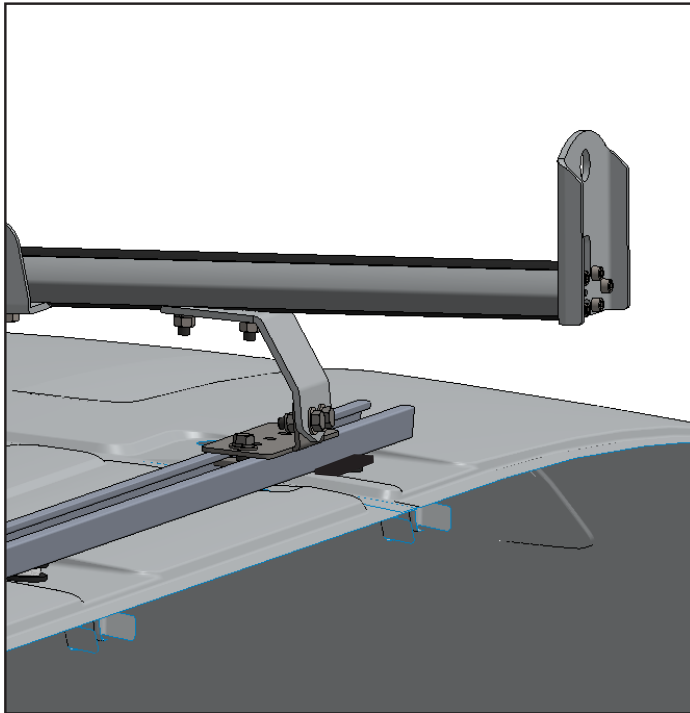
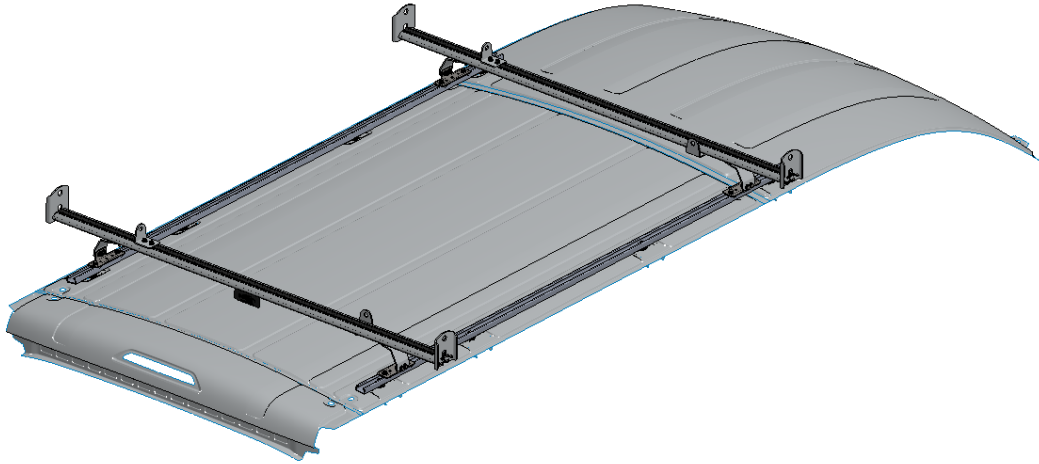
IMPORTANT: Place the cargo rack warning label on a visible area, recommended on a partition.



TOOLS

- ☐ Ratchet
- ☐ 1/2" Socket

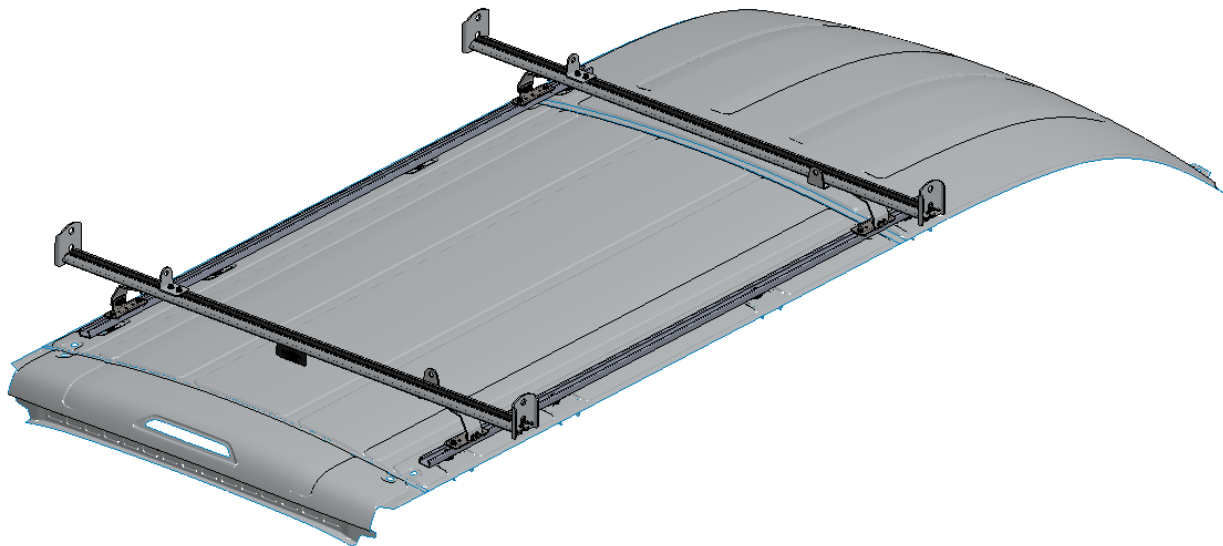
2.2.4 After installation is complete, cut the track plug underneath the front crossbar to fill all the unused space. Failure to do so will result in excessive wind noise.



TOOLS

□ Cutter

TRACK PLUG



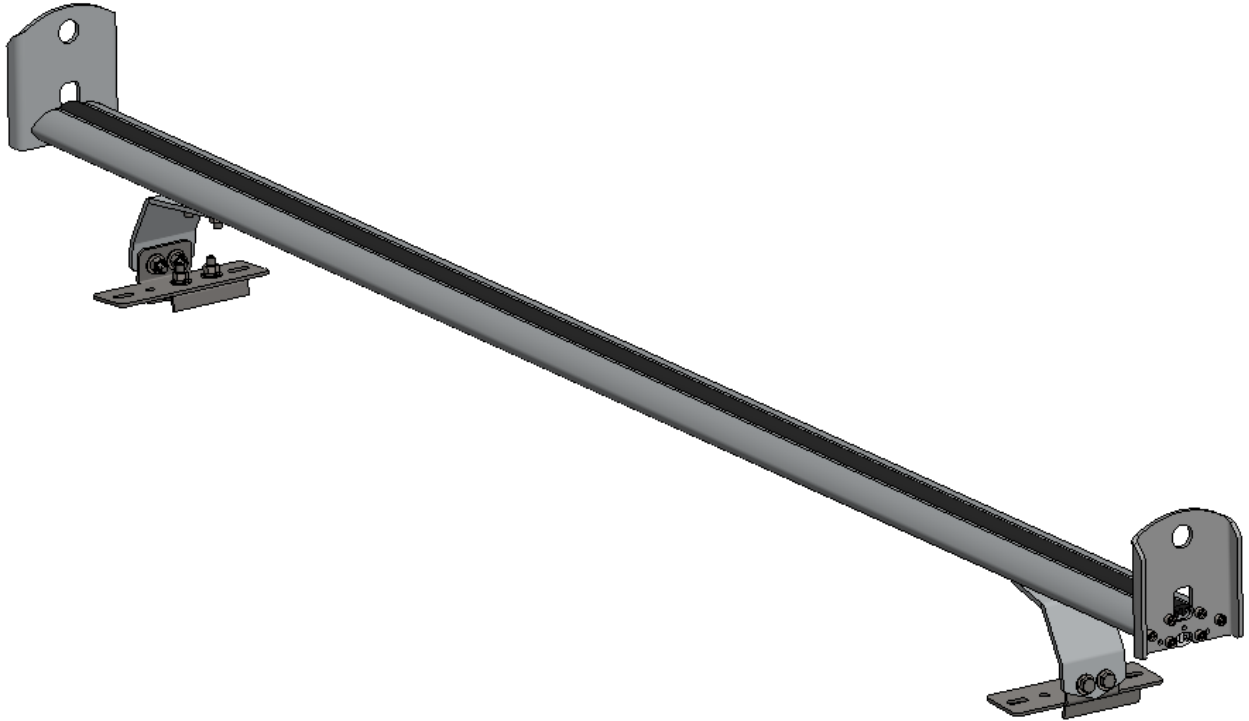
**“You have successfully installed your
1505-FTL Cargo Rack**

Thank you for doing business with us.”

For any feedback or suggestions you may have, please contact: [**cs@rangerdesign.com**](mailto:cs@rangerdesign.com)



INSTALLATION GUIDE

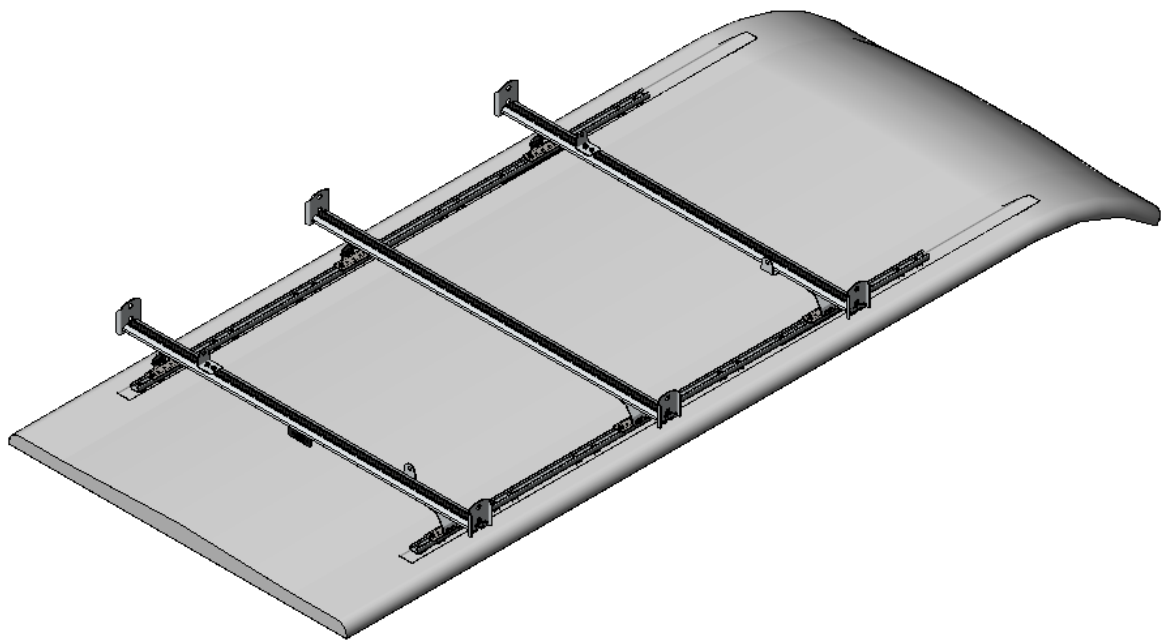


15-U0525 THIRD CROSSBAR

Nissan NV 140" Wheelbase Low Roof & High Roof
Long Ford Transit 148" and 148" Ext Wheelbase
Regular Ford Transit 130" Wheelbase



CARGO RACK WITH THIRD CROSSBAR



QUICK START GUIDE

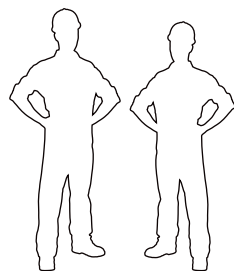
Phase 1 - Assembly

❑ 1.1 Setup.....	4 - 5
❑ 1.2 Third Crossbar Assembly.....	6 - 7

Phase 2 - Installation

❑ 2.1 Channel Nut Installation.....	8
❑ 2.2 Third Crossbar Installation.....	9 - 11

REQUIRED ITEMS



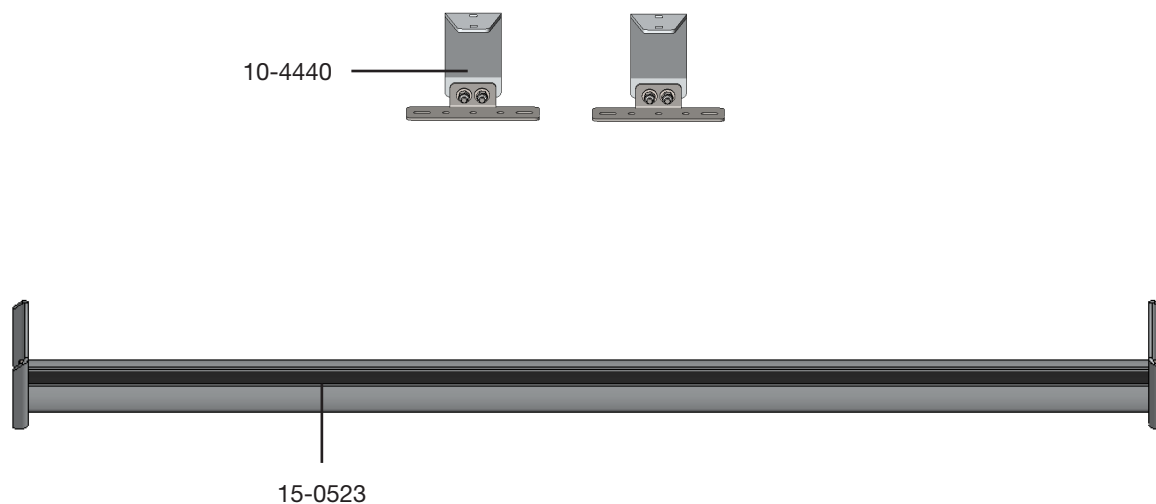
**2
PERSONS**

- ❑ Cordless Impact
- ❑ Ratchet
- ❑ Tape Measure
- ❑ Marker
- ❑ Ladder
- ❑ Cutter
- ❑ 1/2" Socket
- ❑ Box
- ❑ Knife
- ❑ 1/2" Wrench

PHASE 1 – ASSEMBLY

1.1 SETUP

1.1.1 Unpack components; compare with the bill of materials.



1.1.2 Verify all parts are present.

BILL OF MATERIALS





Item No.	Description	Qty.
10-4440	“C” Foot	2
15-0523	Third Crossbar	1
94-1015	Assembly Fastener Kit	1
96-1021	Install Fastener Kit	1

1.1.3 Fastener kits.

94-1015 Fastener Kit



Fastener Assembly

- 4x  # 90-491 Carriage Bolt 5/16"-18 x 1" SS304
- 4x  # 94-105 Hex Nut 5/16"-18 SS316wax
- 4x  # 98-117 Flat Washer 5/16", O.D 3/4" SS18-8
- 4x  # 98-123 Lock Washer Regular 5/16" SS304

4x



#90-491 Carriage Bolt 5/16" x 1"



#98-117 Flat Washer



#98-123 Lock Washer



#94-105 Hex Nut

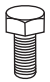
96-1021 Fastener Kit




Fastener Assembly

- 4x  # 90-209 Hex Bolt 5/16"-18 x 1" SS304
- 4x  # 94-150 Channel Nut 5/16"
- 4x  # 98-117 Flat Washer 5/16", OD 3/4" SS18-8
- 4x  # 98-123 Lock Washer 5/16" SS304


4x




#90-209 Hex Bolt 5/16" x 1"



#98-123 Lock Washer



#98-117 Flat Washer



#94-150 Channel Nut

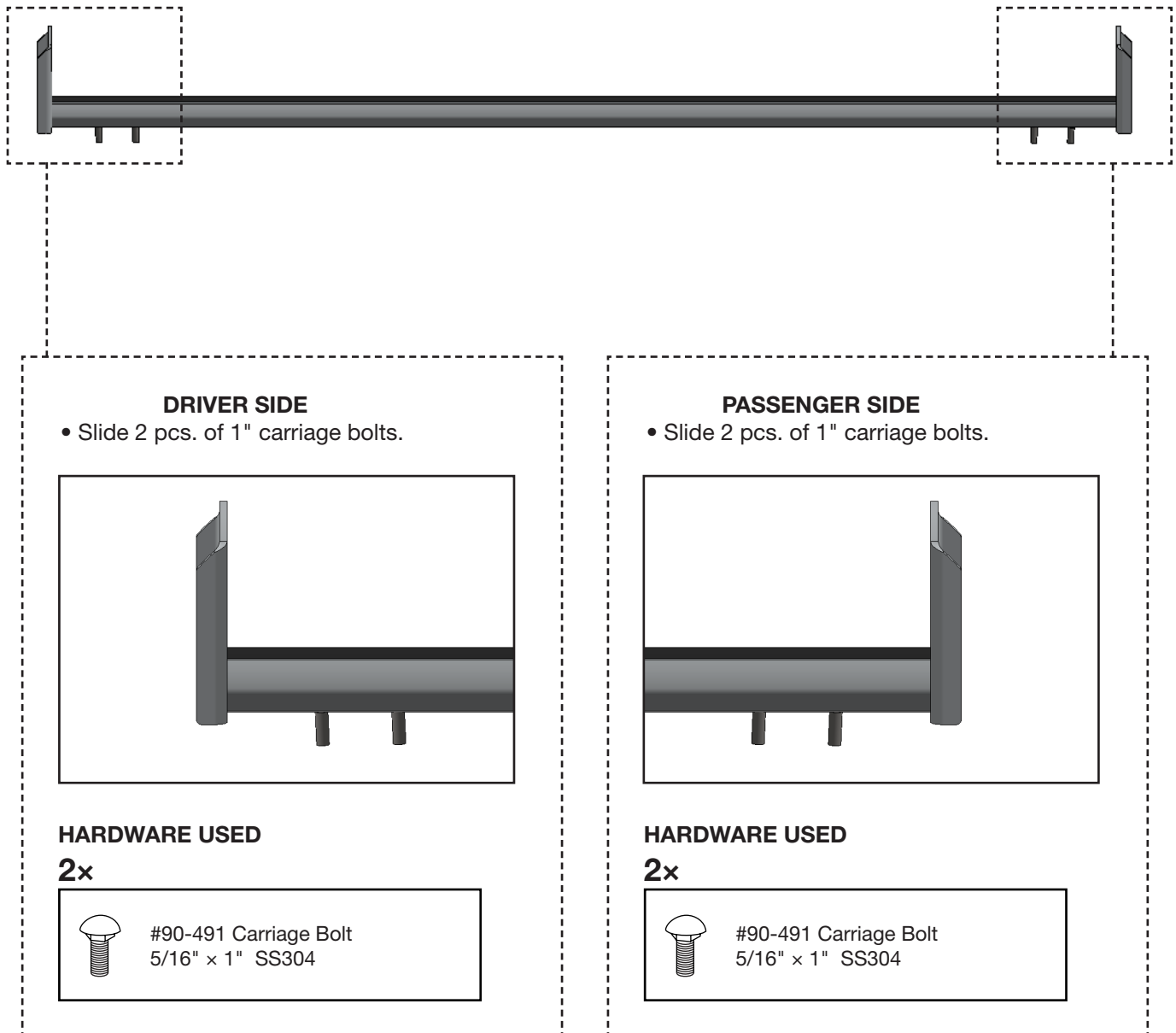
PHASE 1 – ASSEMBLY

1.2 THIRD CROSSBAR ASSEMBLY

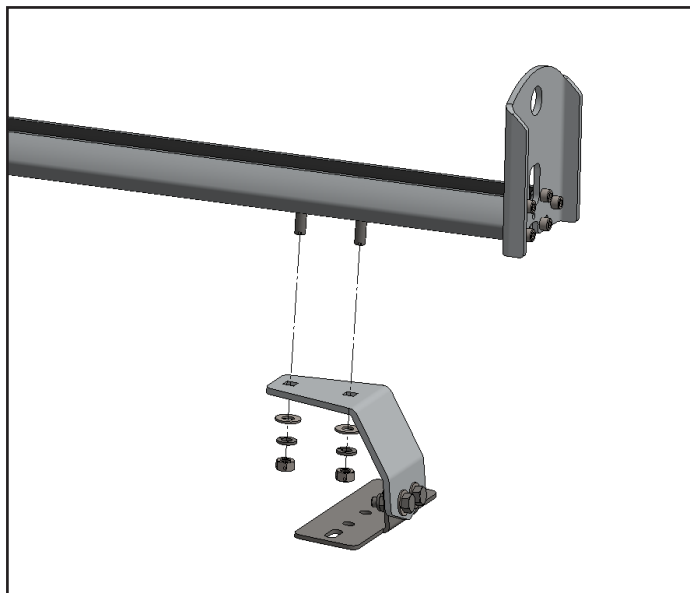
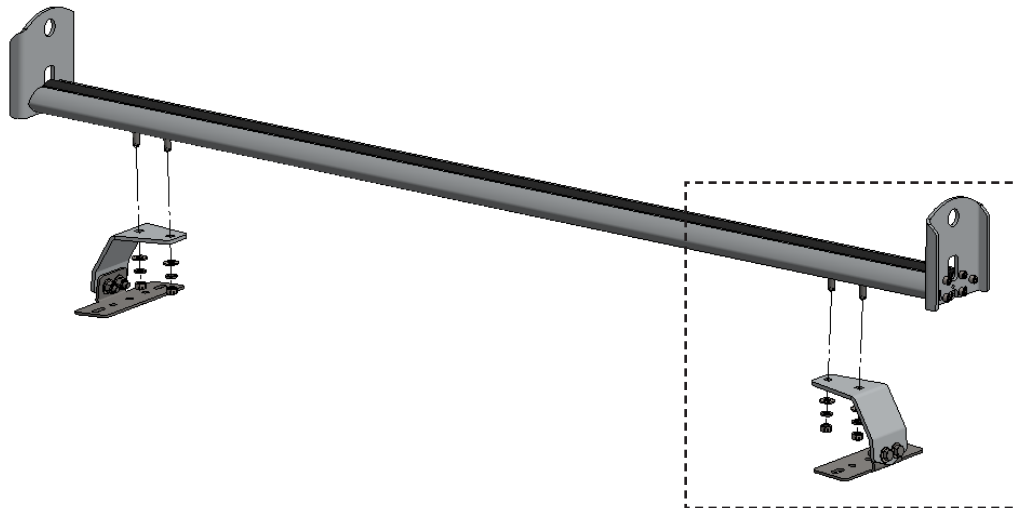
1.2.1 Slide carriage bolts on the bottom face of the crossbar.

NOTE: The track plug must be removed from the underneath of the crossbar, and reinstalled after the feet have been installed in the final position.

TIPS: Use tape to keep the bolts from sliding off.



1.2.2 Install the feet on the crossbar.



HARDWARE USED

4x HAND-TIGHTEN THE NUTS.



Carriage bolts are already on the crossbows.



#98-117 Flat Washer



#98-123 Lock Washer

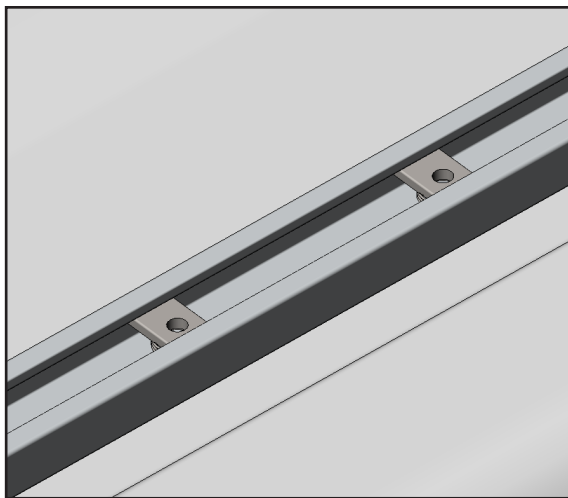
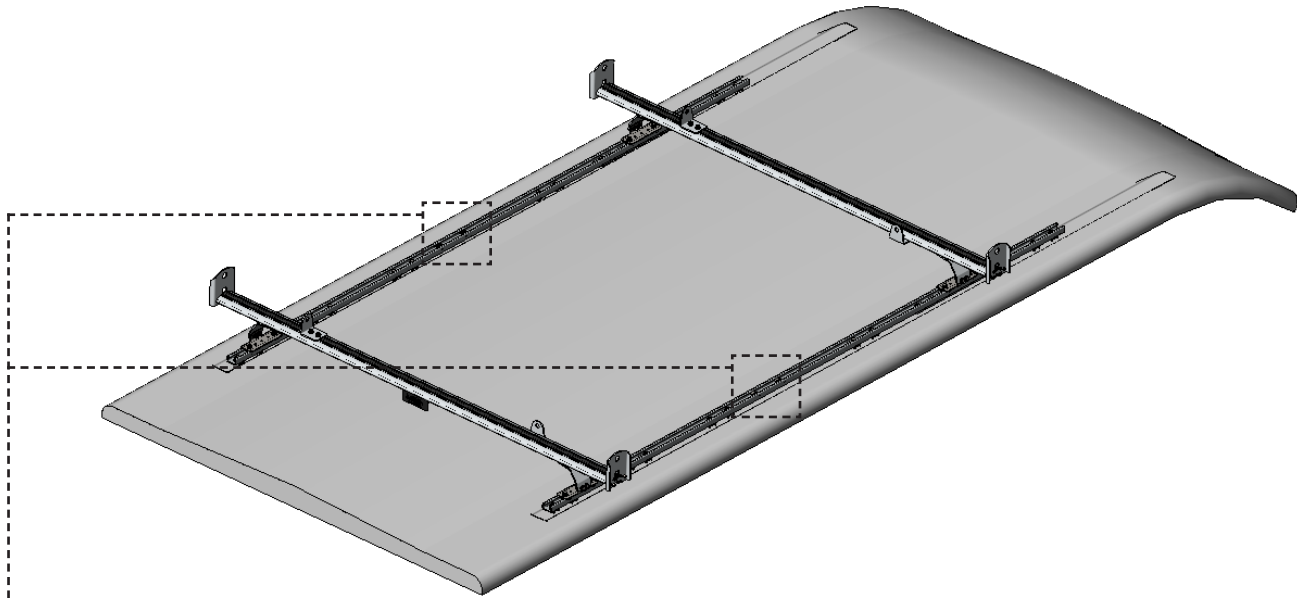


#94-105 Hex Nut

PHASE 2 – INSTALLATION

2.1 CHANNEL NUT INSTALLATION

2.1.1 Attach two channel nuts on each mounting track.



HARDWARE USED

4x



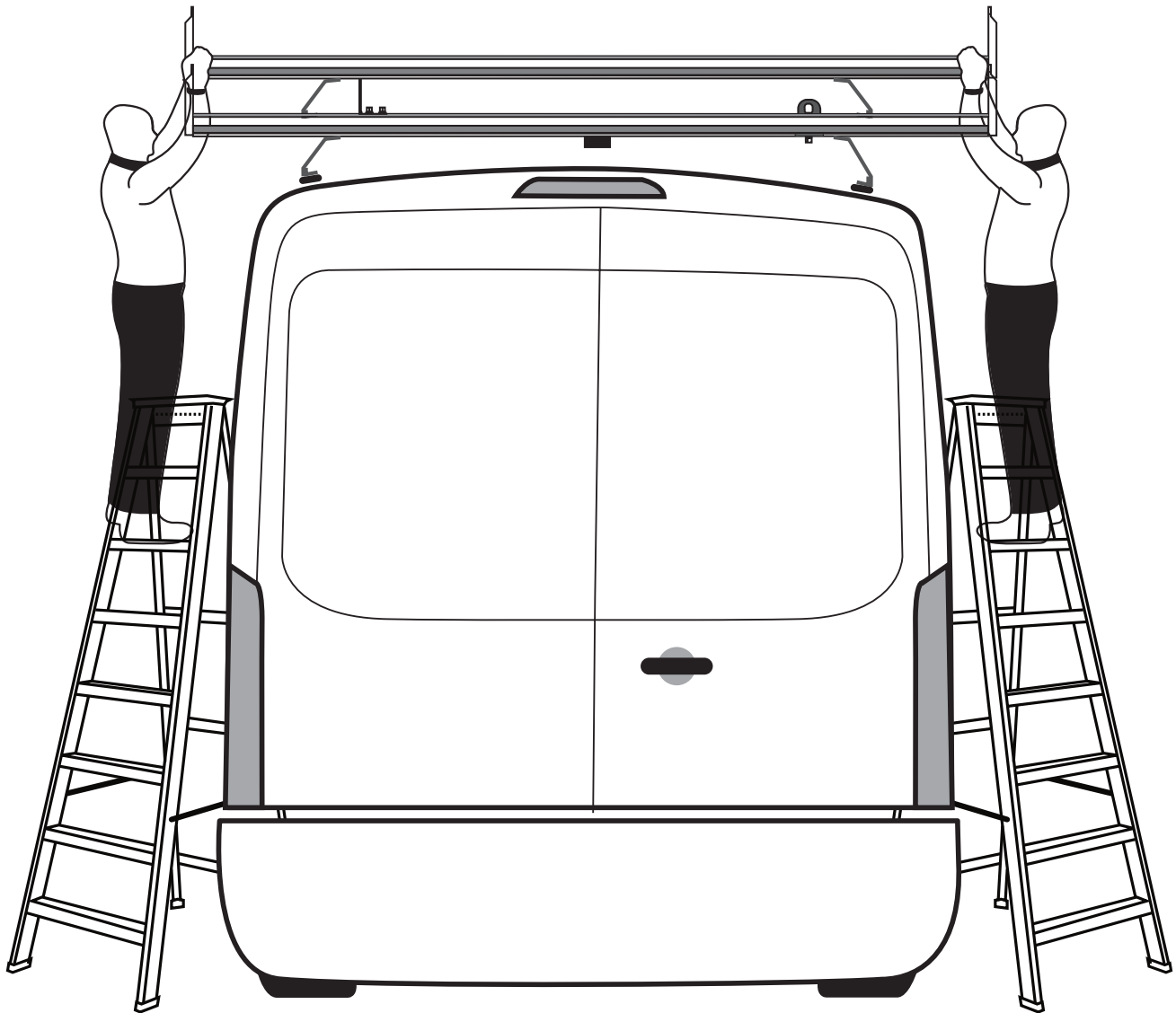
#94-150 Channel Nut

PHASE 2 – INSTALLATION

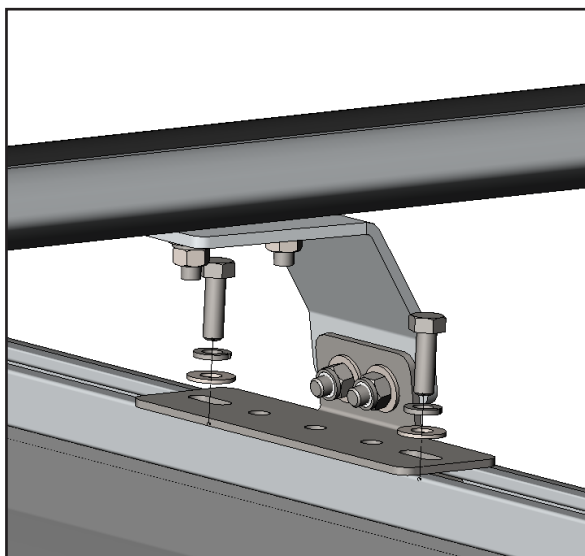
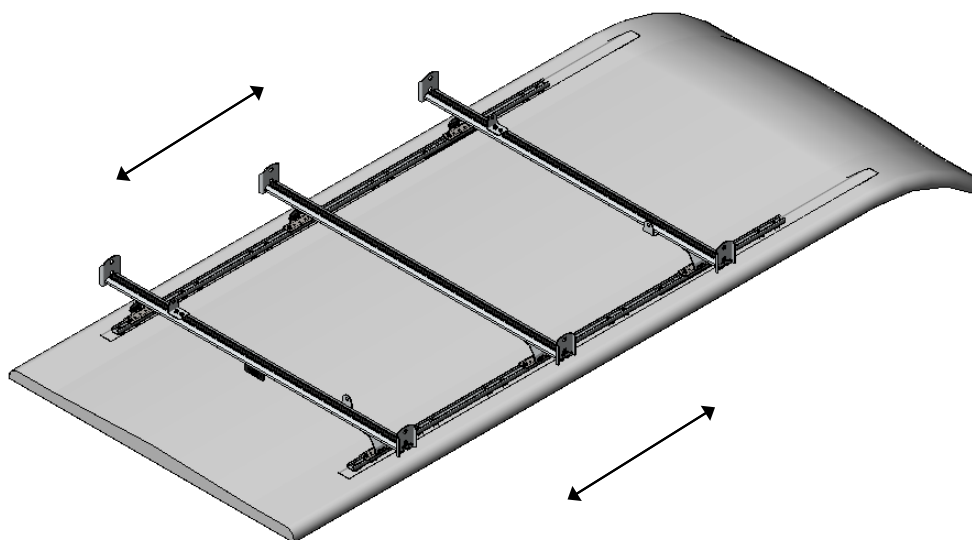
2.2 THIRD CROSSBAR INSTALLATION

2.2.1 Position the third crossbar (**minimum two persons**) on the vehicle so that the feet are on the clamps.

Ladder Rack



2.2.2 While making sure that the third crossbar are parallel to the front and rear crossbars, place the crossbar in the appropriate position, then attach the feet to the mounting track.







TOOLS

- ☐ Ratchet
- ☐ 1/2" Socket
- ☐ Tape Measure

FASTENERS USED

4x

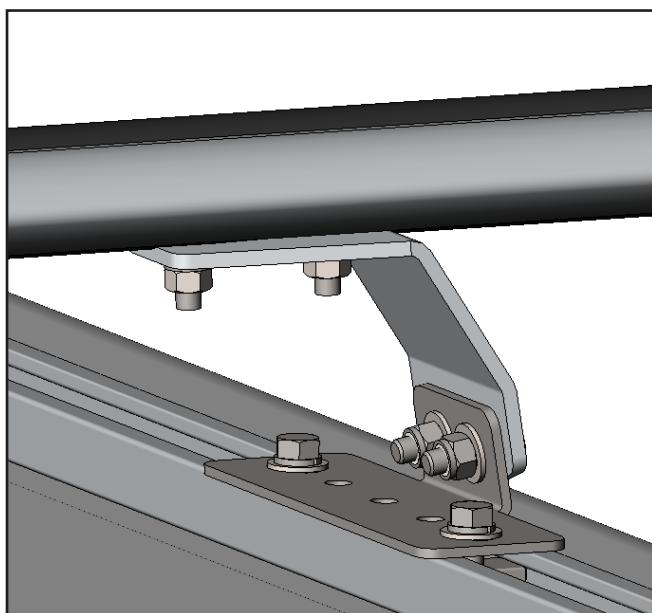
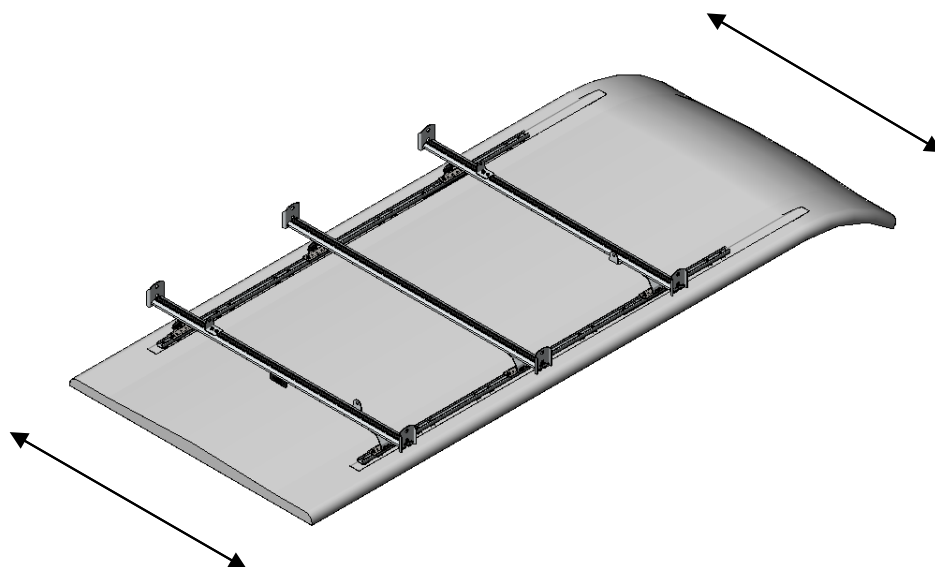
- | | |
|---|-----------------------------|
|  | #90-209 Hex Bolt 5/16" x 1" |
|  | #98-123 Lock Washer |
|  | #98-117 Flat Washer |
|  | #94-150 Channel Nut |

2.2.3 Center the crossbar on the vehicle, then tighten the “C” feet to the crossbar.

NOTE:

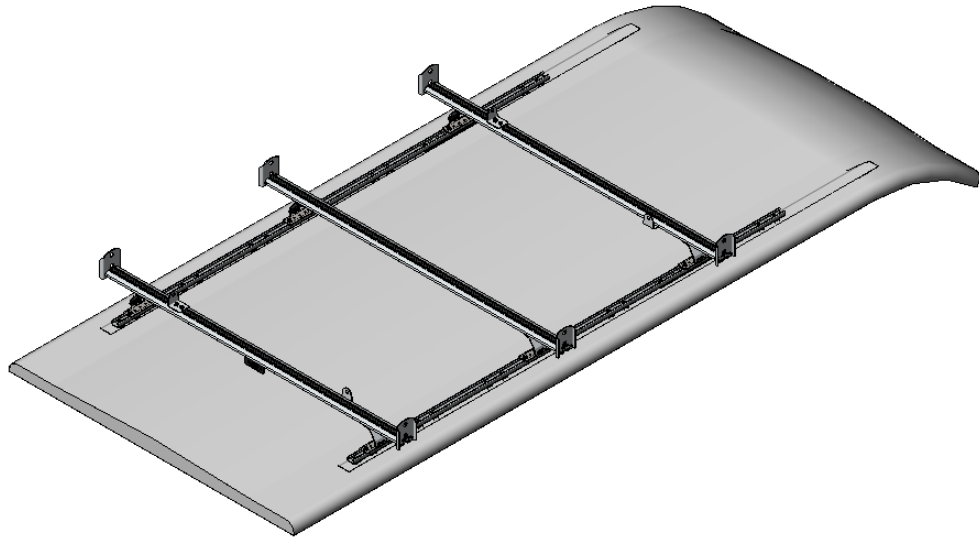
- The ladder cannot extend beyond the rear bumper of the vehicle.
- The center of the ladder must be behind the front crossbar when the ladder is loaded.

IMPORTANT: After installation is complete, cut the track plug underneath the crossbar to fill all the unused space.



TOOLS

- ☐ Ratchet
- ☐ 1/2" Socket
- ☐ Tape Measure



**“You have successfully installed your
Third Crossbar**

Thank you for doing business with us.”

For any feedback or suggestions you may have, please contact: cs@rangerdesign.com

